

Annual Conception Statistics 2010: Key Findings

Under-18 conceptions

England and Wales

- Figures for England and Wales show that the 2010 under-18 conception rate (35.5 conceptions per 1,000) is the lowest estimated rate since 1969. The 7.3% decline in the under-18 conception rate 2009 to 2010 represents the greatest single year decrease in the under-18 conception rate since 1975/76.
- Data for England and Wales show that conception numbers and rates fell at all ages under-18 (see Table 3 in Annex 1). Younger age groups (especially those under 15) continue to account for a very small proportion of teenage conceptions. In 2010 5% of under-18 conceptions in England and Wales were to under 15s.

England

- In 2010, the under-18 conception rate for England was 35.4 conceptions per 1,000 girls aged 15-17. This represents a decline of 7.3% since 2009 (38.2 conceptions per 1,000) and continues the overall downward trend observed since 1998. The under-18 conception rate has fallen by 24% since 1998, down from 46.6 conceptions per 1,000 (see Table 1 in Annex 1).
- The total number of under-18 conceptions in England has declined by 10.5% since 2009, down from 35,966 to 32,552.
- The proportion of conceptions leading to abortions for under-18s was 50.3%, up slightly from 2009 (49.1%).
- Both maternity and abortion rates for under-18s are declining. However, the rate of under-18 conceptions leading to births continues to fall at a faster rate than overall conceptions. In 2010, the rate of under-18 conceptions leading to births was 17.6 per 1,000. This is 10% lower than in 2009 (19.5 per 1,000) and 35% lower than in 1998 (26.9 per 1,000) (see Figure 1 in Annex 1)

Regions

- The under-18 conception rate decreased in all regions 2009-10. London experienced the biggest decline with an 8.8% decrease from 40.7 conceptions per 1,000 in 2009 to 37.1 in 2010. The North East continues to have the highest under-18 conception rate at 44.3 per 1,000 in 2010 whilst the South East has the lowest rate at 28.3 conceptions per 1,000 (See Table 4 in Annex 1.)

Local authorities

- There continues to be considerable variation in performance across local authorities. In 2010 the under 18 conception rate ranged from a low of 13.1 per 1,000 in Wokingham to a high of 64.7 per 1,000 in Haringey.¹
- Comparing 2010 with 2009 the majority of top tier local authorities (112 out of 150)² saw reductions in their under-18 conception rates, with 61 local

¹ The rate was even lower in Rutland (6.2) but care should be taken with figures based on such small areas.

authorities seeing reductions of more than 10%. However, around a quarter of areas saw increases in their under-18 conception rates 2009 to 2010.

- It is important to bear in mind that, given the small numbers involved, local authority rates can be subject to large year on year fluctuations. Comparing the three year aggregate conception rate 2008-2010 against the three year aggregate rate 1998-2000 gives a more robust picture of LAs overall performance smoothing out the effect of any random year on year fluctuations. Nearly all top-tier local authorities (140 out of 150) have seen a reduction in their average under-18 conception rate over this period. (see Figure 3 in Annex 1)

Under-16 conceptions

- There were 6,256 under-16 conceptions in England in 2010. This equates to an under-18 conception rate of 7.0 conceptions per 1,000 girls aged 13-15.
- The under-16 conception rate is 6.7% lower than in 2009 (7.5 conceptions per 1,000) and 20% lower than in 1998 (8.8 conceptions per 1,000) (see Table 2 in Annex 1).
- The proportion of under-16 conceptions leading to abortion was 62.8%, up from 60.2% in 2009. In 2010 the rate of under-16 conceptions leading to births was 2.6 per 1,000 (see Figure 2 in Annex 1).

Other age groups

- The decline in the under-18 conception rate contrasts with increasing conception rates in older age groups over the past 10 years. In 2010, conception rates in England increased among all age groups with the exception of the under 20s.
- The rate of under-20 conceptions was lower in 2010 compared with 2009, falling from 57.1 per 1,000 girls aged 15-19 in 2009 to 54.5 per 1,000 in 2010, a decrease of 4.8%. This continues the overall downward trend in conceptions for this age group over the last decade.

² Data for Isles of Scilly UA are combined with Cornwall UA. Data for City of London LB are combined with Hackney LB.

Annex 1

Table 1: Under-18 Conceptions for England: 1998-2010

Year	Under 18 conceptions	Under 18 conception rate*	Percent leading to legal abortion
1998	41,089	46.6	42.4
1999	39,247	44.8	43.5
2000	38,699	43.6	44.8
2001	38,461	42.5	46.1
2002	39,350	42.7	45.8
2003	39,553	42.1	46.1
2004	39,593	41.6	46.0
2005	39,804	41.3	46.8
2006	39,170	40.6	48.8
2007	40,366	41.8	50.6
2008	38,750	40.5	49.7
2009	35,966	38.2	49.1
2010	32,552	35.4	50.3

Source: Office for National Statistics and DfE, 2012

*per thousand females aged 15-17

Table 2: Under 16 Conceptions for England: 1998-2010

Year	Under 16 conceptions	Under 16 conception rate*	Percent leading to legal abortion
1998	7,855	8.8	52.9
1999	7,408	8.2	53.0
2000	7,620	8.3	54.5
2001	7,407	8.0	56.0
2002	7,395	7.9	55.7
2003	7,558	7.9	57.6
2004	7,181	7.5	57.6
2005	7,473	7.8	57.5
2006	7,330	7.7	60.2
2007	7,718	8.3	62.0
2008	7,123	7.8	61.8
2009	6,756	7.5	60.2
2010	6,256	7.0	62.8

Sources: Office for National Statistics, 2012

*per thousand females aged 13-15

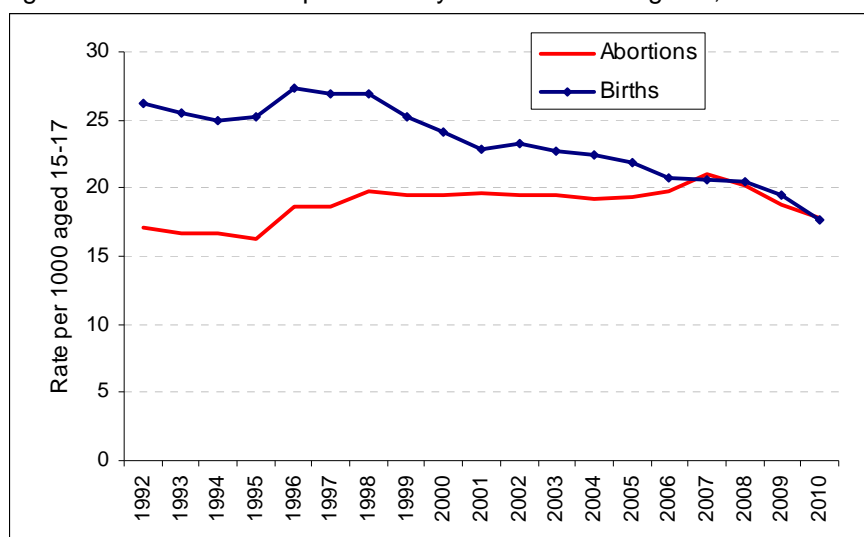
Table 3: Conceptions by single year age group: **England and Wales**

Age	All conceptions (base numbers)		% leading to legal abortion		Conception rates per 1,000	
	2009	2010	2009	2010	2009	2010
Under 14	316	305	57.9	68.2	1.0	1.0
14	1,697	1,552	64.9	68.8	5.4	4.9
15	5,145	4,817	58.2	60.2	15.9	15.2
Under-16	7,158	6,674	59.8	62.5	7.5	7.0
16	11,896	10,629	49.7	49.7	36.0	32.6
17	19,205	17,330	44.2	45.2	55.9	52.2
Under-18	38,259	34,633	48.8	49.9	38.3	35.5

Source: Office for National Statistics and DfE, 2012

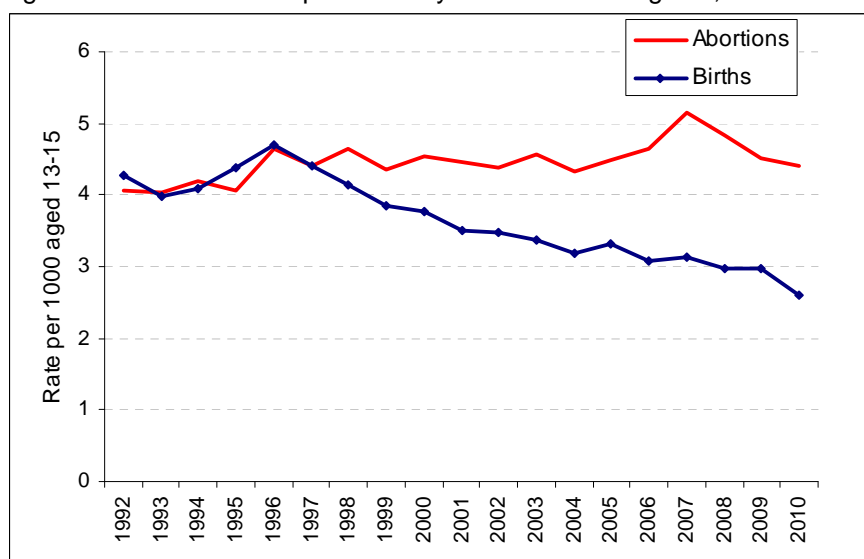
Note: Figures are for England and Wales not England only

Figure 1: Under-18 conception rate by outcome* for England, 1992-2010



* Rate of abortions/births resulting from under-18 conceptions Source: Office for National Statistics and DfE, 2012

Figure 2: Under-16 conception rate by outcome* for England, 1992-2010



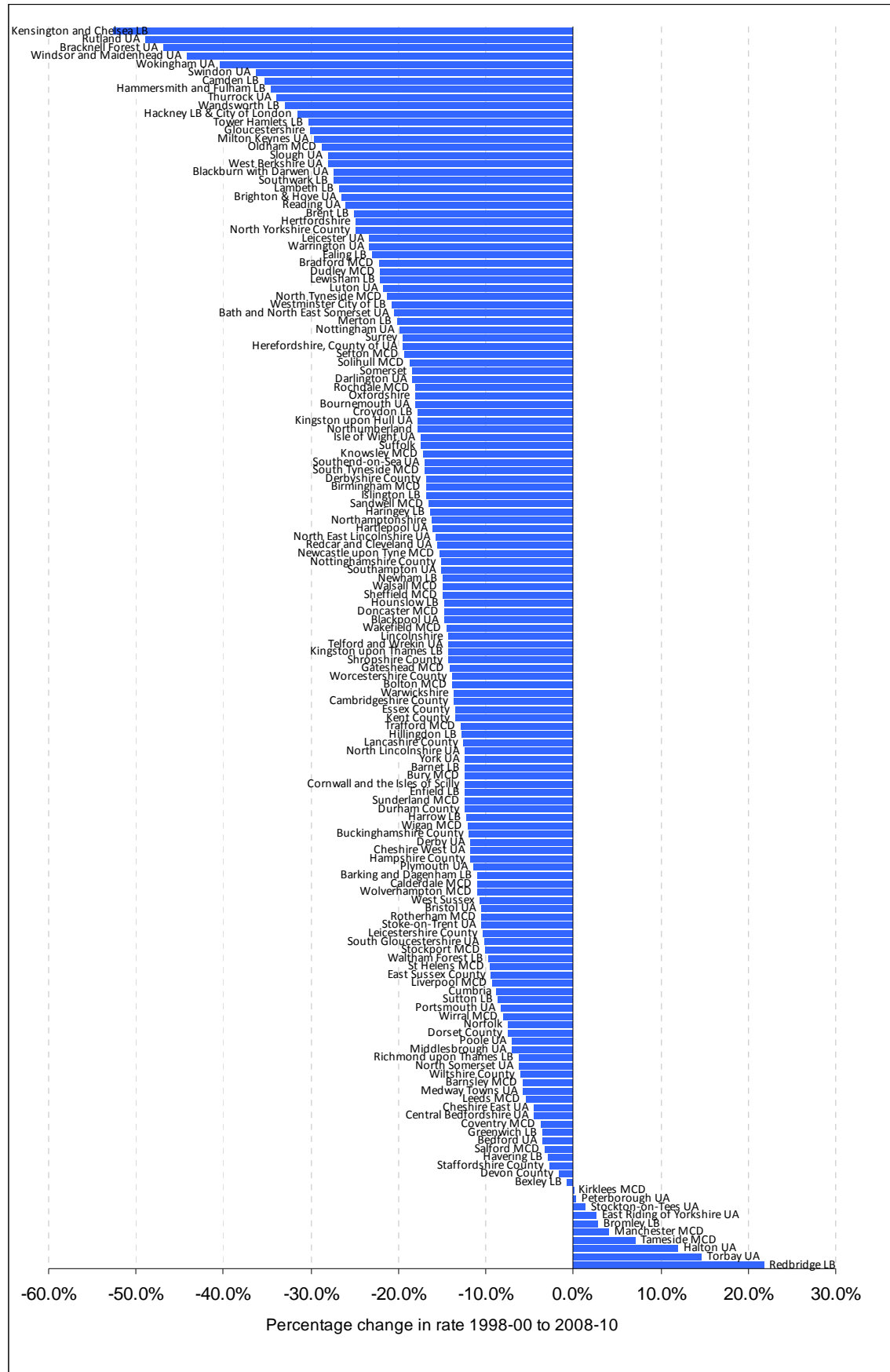
* Rate of abortions/births resulting from under-16 conceptions Source: Office for National Statistics and DfE, 2012

Table 4: Change in under-18 conception rates by region, 1998-2010

Region	Conception rate per 1,000 15-17 year olds			% change	
	1998	2009	2010	2009-2010	1998-2010
England	46.6	38.2	35.4	-7.3%	-24.0%
North East	56.5	46.9	44.3	-5.5%	-21.6%
North West	50.3	43.7	40.7	-6.9%	-19.1%
Yorkshire & Humber	53.1	44.1	40.5	-8.2%	-23.7%
East Midlands	48.8	37.7	34.5	-8.5%	-29.3%
West Midlands	51.7	43.9	40.5	-7.7%	-21.7%
East England	37.9	31.3	29.8	-4.8%	-21.4%
London	51.1	40.7	37.1	-8.8%	-27.4%
South East	37.8	30.1	28.3	-6.0%	-25.1%
South West	39.4	32.4	29.9	-7.7%	-24.1%

Source: Office for National Statistics and DfE, 2012

Figure 3: Change in under-18 conception rate by LA in England, 1998-2000 to 2008-2010



Source: Office for National Statistics and DfE, 2012