

# Statistical First Release



**SFR 25/2009**

**13 October 2009**

**Coverage: England**

**Theme: Education and  
Training**

**Issued by**  
Department for Children,  
Schools and Families  
Sanctuary Buildings  
Great Smith Street  
London SW1P 3BT

**Telephone:**  
**Press Office**  
020 7925 6789  
**Public Enquiries**  
0870 000 2288

**Statistician**  
Martin Hill  
020 7340 7933

**Email**  
[info@dcsf.gov.uk](mailto:info@dcsf.gov.uk)

**Internet**  
[http://www.dcsf.gov.uk/  
rsgateway/DB/SFR/](http://www.dcsf.gov.uk/rsgateway/DB/SFR/)

## **Children looked after in England (including adoption and care leavers) year ending 31 March 2009**

This Statistical First Release (SFR) provides information about looked after children in England for the year ending 31 March 2009. The figures are based on data from the SSDA903 return collected from all local authorities.

This release reports progress on seven National Indicators (NI), two of which also contribute to PSA 16 "To increase the proportion of socially excluded adults in settled accommodation and employment, education or training".

### **KEY POINTS**

#### **Children looked after at 31 March 2009 - Tables A1 to A5**

- There were 60,900 looked after children at 31 March 2009, 2 per cent more than last year's figure of 59,400 and relatively unchanged compared to 2005 (61,000).
- Overall, the main reason why social services first engaged with these looked after children was because of abuse or neglect (61 per cent). This percentage has changed little over the past 5 years.
- Most looked after children at 31 March 2009 were of White British origin (73 per cent). Their numbers have decreased since 2005, falling from 45,900 (75 per cent) to 43,800 in 2008 (74 per cent), followed by a slight increase to 44,500 in 2009. The breakdown by the different ethnic groups has remained similar since 2005.
- At 31 March 2009, 36,200 children were looked after under a care order which represents 59 per cent of all legal statuses. This is a decrease of 2 per cent from last year's figure of 36,900 and a decrease of 10 per cent from 2005 (39,800). The percentage of children looked after under a voluntary agreement increased from 29 per cent to 32 per cent since last year.
- 44,200 children were looked after at 31 March 2009 in a foster placement (73 per cent). This is an increase of 5 per cent on the previous year's figure of 42,000 and an increase of 7 per cent from 2005 (41,400). 2,500 children were placed for adoption at 31 March 2009. This is a decrease of 13 per cent from last year and a decrease of 28 per cent from the 2005 figure (3,400).

#### *Unaccompanied Asylum Seeking Children (UASC) – Table A4*

- There were 3,700 UASC who were looked after at 31 March 2009, this is an increase of around 200 children compared to the figure for 2008. The number of male UASC has continued to increase each

year rising from 69 per cent in 2005 to 87 per cent in 2009. Whereas the number of female UASC has continued to decrease each year during this period.

- In 2009 the percentage of UASC of Black African origin decreased by 7 percentage points to 17 per cent, whilst the percentage of UASC of any other Asian background increased by 3 percentage points to 33 per cent.

#### *Mothers aged 12 and over – Table A5*

- There were 320 mothers aged 12 and over who were looked after at 31 March 2009, the same as the previous year and an increase of 7 per cent from the 2005 figure of 290.

#### **Children who started to be looked after during the year ending 31 March 2009 – Tables C1 to C3**

- There were 25,400 children who started to be looked after during the year ending 31 March 2009, an increase of 9 per cent from the previous year's figure of 23,300 and an increase of 2 per cent from the 2004-05 figure of 25,000. The percentage of children that started to be looked after due to police protection has risen from 8 per cent in 2005 to 12 per cent in 2009
- During the year ending 31 March 2009, 36 per cent of children who started to be looked after were aged between 10 and 15 years old. This figure has decreased over the past 5 years from 40 per cent in 2005. Whereas the number of children aged 16 and over continue to increase (7 per cent in 2005 to 11 per cent in 2009)

#### **Children who ceased to be looked after during the year ending 31 March 2009 – Tables D1 to D3**

- There were 24,700 children who ceased to be looked after during the year ending 31 March 2009, an increase of 1 per cent from the previous year's figure of 24,400 and a decrease of 5 per cent from the 2004-05 figure of 26,000.
- The percentage of children who ceased to be looked after aged between 5 and 9 years old has decreased over the last 5 years from 16 per cent in 2004-05 to 13 per cent in 2008-09. There was a similar drop in the 10 to 15 age category where the percentage dropped from 28 per cent in 2004-05 to 23 per cent in 2008-09. However, the percentage of children who ceased to be looked after aged 16 and over increased over the past 5 years from 29 per cent in 2004-05 to 35 per cent in 2008-09.

#### **Looked after children who were adopted during the year ending 31 March 2009 – Tables E1 and E2**

- 3,300 looked after children were adopted during the year ending 31 March 2009. This represents a 3 per cent increase from the previous year's figure of 3,200 and a 13 per cent decrease from the 2004-05 figure of 3,800.
- The number of children looked after who were under 1 year old at adoption decreased over the last 5 years from 210 in 2004-05 to 80 in 2008-09. However, the percentage of children adopted that were aged 1 to 4 has increased from 62 per cent in 2004-05 to 72 per cent in 2008-09.
- The percentage of children looked after who were adopted that were of white ethnic origin has decreased over the past 5 years from 86 per cent in 2004-05 to 82 per cent in 2008-09,

whereas the percentage of mixed ethnic origin children looked after who were adopted increased over the same period from 9 per cent in 2004-05 to 12 per cent in 2008-09.

*Adopters of looked after children who were adopted in the year ending 31 March 2009 – Table E2*

- 92 per cent of children looked after who were adopted in 2008-09 were adopted by two people (3,000). This is an increase from 91 per cent in the previous 2 years. Most adopters were married (82 per cent), however, this is a decrease from 84 per cent in the previous 2 years. In 2009, 6 per cent of adopters were an unmarried couple (different gender), 1 per cent were an unmarried couple (same gender) and 2 per cent were civil partners.
- 8 per cent of looked after children who were adopted in 2008-09 were adopted by a single adopter. Of these single adopters, 95 per cent were female.

**Children who ceased to be looked after aged 16 years and over during the year ending 31 March 2009 – Table F1**

- The number of children aged 16 years and over who ceased to be looked after during the year ending 31 March increased from 7,600 in 2004-05 to 8,700 in 2008-09.
- 61 per cent of these children ceased to be looked after on their 18<sup>th</sup> birthday, an increase from 52 per cent in 2005. 21 per cent ceased to be looked after aged 16 years, a decrease from 29 per cent in 2005.
- In 2008-09, 44 per cent of these children had at least 1 GSCE or GNVQ (3,800) compared to 46 per cent in the previous year. 7 per cent of the 8,700 children obtained at least 5 GCSEs at grade A\* to C, a figure which has remained the same over the last few years.

**Children now aged 19 years who were looked after on 1 April 2005 then aged 16 years – Table G1**

- The number of children now aged 19 years who were looked after on 1 April 2006 then aged 16 years increased from 5,200 in 2005 to 6,100 in 2009.
- Over the past 5 years, the percentage of children now aged 19 years who were in education other than higher education increased from 19 per cent to 26 per cent. The percentage of children who were in training or employment decreased from 34 per cent to 30 per cent between 2005 and 2009. The percentage of children who were not in touch with the local authorities decreased from 11 per cent to 6 per cent over the last 5 years.
- Most children now aged 19 years who were looked after at 16 years are accommodated in independent living (43 per cent). This percentage has remained fairly stable over the last 5 years.

## National Indicator Set

In April 2008 the National Indicator Set was introduced. These are a set of performance indicators for Local Authorities. Further information on the National Indicator Set is available on the Communications and Local Government website via the following link:

<http://www.communities.gov.uk/publications/localgovernment/nationalindicator>

There are seven National Indicators which are monitored by this data:

- **NI 58: Emotional and behavioural health of looked after children**

This is the first year that data on the emotional and behavioural health of looked after children has been collected and some issues with the quality of the data submitted have been identified (see paragraph 16 of the Technical Notes for further details). The average score on the Strengths and Difficulties Questionnaire (SDQ) for children aged 4 to 16 who had been looked after continuously for at least twelve months at the 31 March was 13.9. This indicator is calculated as the average score for children with a completed SDQ, however these were completed for just 65 per cent of the eligible cohort and within this there was a higher than expected proportion of zero scores.

- **NI 61: Timeliness of placements of looked after children for adoption following an agency decision that the child should be placed for adoption**

In 2009, 75.8 per cent of children who were adopted during the year were placed for adoption within 12 months of the decision that they should be placed for adoption. This was about 4 percentage points less than in 2005.

- **NI 62: Stability of placements of looked after children: number of placements**

10.7 per cent of children had three or more placements during 2009. This figure has decreased steadily from 13.7 per cent since 2005.

- **NI 63: Stability of placements of looked after children: length of placement**

67.0 per cent of children who had been looked after for two-and-a-half years or more had, in the past two years to 31 March 2009, lived in the same placement or their combined adoptive placement and preceding placement. This percentage has increased gradually since 2005 when the percentage was 62.9 per cent.

- **NI 66: Looked after children cases which were reviewed within required timescales**

90.9 per cent of children had their cases reviewed within the required timescales during 2009. This percentage has increased from 78.9 per cent in 2006 but there has been little change compared to last year (90.0 per cent).

- **NI 147 (PSA 16): Care leavers in suitable accommodation**

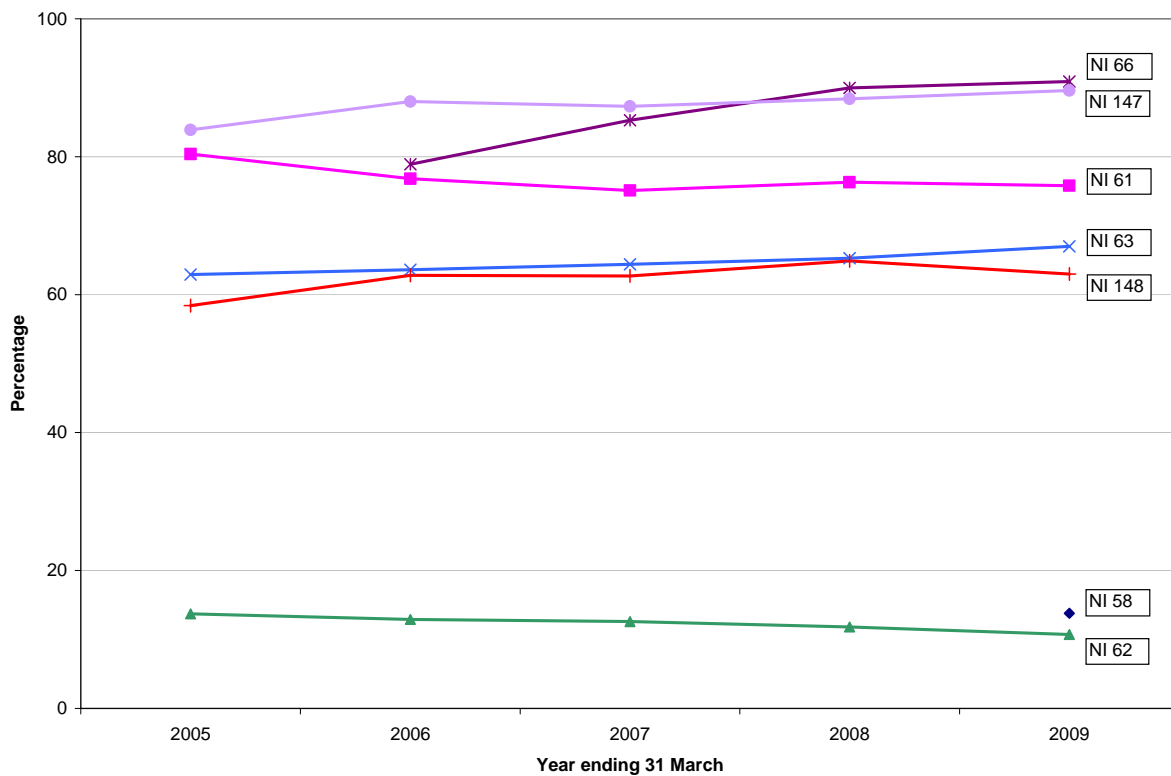
89.6 per cent of former care leavers, with whom the local authorities were in touch during 2009, were considered to be in suitable accommodation around the time of their 19th birthday. This compares with 83.9 per cent during 2005 and 88.4 per cent last year.

- **NI 148 (PSA 16): Care leavers in education, employment or training**

In the past 4 years the percentage of former care leavers, with whom the local authorities were in touch and who were in education, employment or training around the time of their 19th birthday, had increased from 58.4 per cent in 2005 to 64.9 per cent in 2008. However, in 2009 the percentage dropped to 63.0 per cent.

The chart below shows the progress that has been made for each National Indicator in recent years.

**Chart 1: Performance in the seven National Indicators between 2005 and 2009, England**



## **Tables**

### **Children looked after at 31 March 2009 - Tables A1 to A5**

Table A1:	Children looked after at 31 March by gender, age at 31 March, category of need, and ethnic origin, 2005-2009, England.
Table A2:	Children looked after at 31 March by legal status, 2005-2009, England.
Table A3:	Children looked after at 31 March by placement, 2005-2009, England.
Table A4:	Unaccompanied Asylum Seeking Children looked after at 31 March by gender, age at 31 March, category of need and ethnic origin, 2005-2009, England.
Table A5:	Mothers aged 12 years and over looked after at 31 March by age at 31 March, age at birth of first child, category of need, ethnic origin and placement, 2005-2009, England.

### **Children looked after during the year ending 31 March 2009 - Table B1**

Table B1:	Children looked after during the year under at least one agreed series of short term placements, by gender, by age at the end of the latest period of care, or at 31 March if child is still covered by an agreement, by placement, and by category of need for the years ending 31 March 2005-2009, England.
-----------	---

### **Children who started to be looked after during the year ending 31 March 2009 – Tables C1 to C3**

Table C1:	Children who started to be looked after during the years ending 31 March by gender, age on starting, category of need and ethnic origin, 2005-2009, England.
Table C2:	Children who started to be looked after during the years ending 31 March by legal status on starting, 2005-2009, England.
Table C3:	Children who started to be looked after during the years ending 31 March by placement on starting, 2005-2009, England.

### **Children who ceased to be looked after during the year ending 31 March 2009 – Tables D1 to D3**

Table D1:	Children who ceased to be looked after during the years ending 31 March by gender, age on ceasing, reason episode ceased, category of need and ethnic origin, 2005-2009, England.
Table D2:	Children who ceased to be looked after during the years ending 31 March by placement on ceasing, 2005-2009, England.

Table D3: Mothers aged 12 years and over who ceased to be looked after during the years ending 31 March by age on ceasing, age at birth of first child, category of need and ethnic origin, 2006-2009, England.

### **Children looked after who were adopted during the year ending 31 March 2009 – Tables E1 and E2**

Table E1: Looked after children adopted during the years ending 31 March by gender, age at adoption, ethnic origin, category of need, final legal status, duration of final period of care and age on starting final period of care, 2005 to 2009, England.

Table E2: Children looked after who were adopted during the year ending 31 March by number of adopters and by legal status of adopters and gender of adopters, 2007 to 2009, England.

### **Children who ceased to be looked after aged 16 years and over during the year ending 31 March 2009 – Table F1**

Table F1: Children aged 16 years and over who ceased to be looked after during the years ending 31 March by gender, age on ceasing, ethnic origin, final placement and qualifications, 2005-2009, England.

### **Children now aged 19 years who were looked after on 1 April 2005 then aged 16 years – Table G1**

Table G1: Children now aged 19 years who were looked after on 1 April 2001 to 1 April 2005 then aged 16 years (in their 17th year) by gender, activity and accommodation, 2005-2009, England.

### **National indicator set**

Table NI 58: Emotional and behavioural health of looked after children  
Average score for children looked after at 31 March for whom a Strengths and Difficulties Questionnaire (SDQ) was completed, 2009, Local Authority

Table NI 61: The percentage of children looked after adopted during the year who were placed for adoption within 12 months of the decision that they should be placed for adoption, and who remained in that placement on adoption, 2005-2009, Local Authority

Table NI 62: The percentage of children looked after at 31 March with three or more placements during the year ending 31 March, 2005-2009, Local Authority

Table NI 63: The percentage of children looked after aged under 16 at 31 March who had been looked after continuously for at least 2.5 years who were living in the same placement for at least 2 years, or are placed for adoption and their adoption and their adoptive placement together with their previous placement, last for at least 2 years, 2005-2009, Local Authority

- Table NI 66: The percentage of children looked after cases which should have been reviewed during the year ending 31 March that were reviewed on time during the year, 2006-2009, Local Authority
- Table NI 147: The percentage of former care leavers aged 19 who were looked after on 1 April in their 17th year, who were in suitable accommodation, 2005-2009, Local Authority
- Table NI 148: The percentage of former care leavers aged 19 who were looked after on 1 April in their 17th year, who were in education, employment or training, 2005-2009, Local Authority

### **Additional Information**

Detailed local authority data on looked after children will be released between November and December 2009 in a series of three batches of additional tables. Their publication will be announced two weeks in advance in the "Coming soon" section of the DCSF website at:

<http://www.dcsf.gov.uk/rsgateway/whatsnew.shtml>



## TECHNICAL NOTES

### Data Collection

1. The 2008-09 figures for looked after children are the latest in a regular series. Data are collected on the SSDA903 return, which provides the Department for Children, Schools and Families with data on looked after children in England. It also covers adoptions of looked after children, educational qualifications of care leavers, the activity of former care leavers aged 19, and the National Indicator Set.
2. All references made to “year” relate to the standard financial year which runs from 1 April to 31 March (for example 2009 should be understood as 1 April 2008 to 31 March 2009).
3. The figures presented for the year ending 31 March 2009 are based on data reported by all 150 local authorities in England, with the exception of Isles of Scilly who are not required to submit a return as they do not have any looked after children within their authority.
4. The database used to collect this information is longitudinal with one record for every child. As local authorities are continually updating the database every year, previous year’s figures have also been amended where there have been changes (see footnotes on historical changes in the relevant tables).
5. Between 1997-98 and 2002-03 local authorities were required to submit a CLA100 return along with the SSDA903 return. The CLA100 was an aggregate return completed for all children looked after at 31 March while the SSDA903 was a one-in-three sample survey. From year ending 31 March 2004, the SSDA903 covered all children looked after and so the CLA100 was not required.  
Between 1997-98 and 2002-03, the AD1 return was completed for all children looked after who were adopted during the year; the OC1 return collected data on the qualifications achieved at the point of leaving care for young people leaving care in the year aged 16 and over; and the OC3 return collected data on the activity and accommodation of former care leavers at age 19 who were looked after on 1 April aged 16 years old (in their 17th year). From year ending 31 March 2004, these returns were collected as part of the SSDA903 data collection and so are not referred to as such anymore.
6. Guidance notes and other documents useful for the completion of the SSDA903 return can be found on the DCSF children’s statistical returns website at:

<http://www.dcsf.gov.uk/datastats1/guidelines/children/returns.shtml#clad>

### Rounding Conventions

7. Figures have been rounded to the nearest 100 if they exceed 1,000 and to the nearest 10 otherwise, with the exception of numbers from one to five inclusive which for confidentiality purposes have been replaced in the published tables by a hyphen (-). Where any number is shown as zero (0), the original figure submitted was zero (0). The following convention has been used: “x” means not applicable.
8. Percentages have been rounded to whole numbers (with the exception of figures for National Indicators which are shown to 1 decimal place) but where the numerator was five or less or the denominator was 10 or less, they have been suppressed and replaced by a hyphen (-). Note that percentages may not sum to 100 due to rounding.

9. It has been necessary to suppress other figures whenever it would be possible to calculate the value of a suppressed number by means of simple arithmetic. The rule applied in these circumstances has been to suppress the next smallest data item provided its value is strictly less than 20.

## **Data Changes**

10. New data items collected in 2008-09 were placement provider, placement location and adoption plan information for all looked after children and information on the Strengths and Difficulties Questionnaire (SDQ) of children looked after continuously for 12 months at 31 March.
11. Placement provider information gives details on the party providing each placement. Placement location provides information on whether the placement is inside or outside the local authority responsible for providing the child's care. We will publish information on placement provider and placement location within our additional set of tables.
12. The SDQ score, as recorded by a main carer, is an indicator of the emotional and behavioural health of looked after children. Knowledge of the mental health of looked after children is important in order to improve both their outcomes and life chances. SDQ scores are published in Table NI 58 and further details around the quality of this data are included in paragraph 16 below.
13. Tables including ethnicity breakdown now include new ethnic classifications (Traveller of Irish Heritage, Gypsy/Roma, Refused, and Information not yet available) which were collected for the first time in the 2008-09 collection. They were introduced in order to bring the ethnic classification in the SSDA903 in line with those in the Children in Need (CIN) return.
14. Some of the information previously collected via the Outcome Indicators (OC2) return for children looked after continuously for at least 12 months at 31 March was added to the SSDA903 for the first time in 2008-09. The information collected included data on offending, health promotion checks, immunisations, dental checks, health assessments, substance misuse problem identification and intervention, and position and activity after year 11. The data collected on the SSDA903 will be compared with the data that was collected via the OC2 return for 2007-08. Depending on the results of the comparison, we will publish the OC2 data obtained from the SSDA903 within our additional set of tables. We are continuing to work on the project matching data collected from the SSDA903 with the National Pupil Database, which would allow us to calculate the attainment indicators currently collected via the OC2 return. The report into this evaluation was delivered in January 2009 and raised some concerns about the matching in particular groups. We have been working through a number of recommendations made in this report and shall be evaluating the quality of the matching with the 2008-09 data once it has been received. Once this data has been analysed we shall be making a decision about whether the quality of the new matched data source is sufficient to replace the OC2 data collection for these data items. We are expecting to make a decision about the status of the 2009-10 OC2 collection by the end of 2009.

## **Data quality**

15. Data quality issues have been identified with the new adoption plan data items, in particular lower volumes of data were submitted than expected. This data cannot be published until improvements are made to the system. We have revised the appropriate section in our guidance notes so that local authorities are clearer about the cohort of children for whom this

section should be completed. We will include stricter validation rules to ensure that more accurate data is captured in the 2009-10 data collection.

16. SDQ scores were collected for the first time in 2008-09 for children aged between 4 and 16 who had been looked after continuously for at least twelve months at the 31 March 2009. SDQ scores were only submitted for 59% of eligible children. Of the scores submitted there was a higher than expected proportion of zero scores, with 11 local authorities submitting a zero score for 10 per cent or more of their eligible cohort. The guidance notes and communications circulated to local authorities will clarify that the SDQ score and reason for no score are both compulsory in the 2009-10 collection. Stricter validation rules will also be included to identify those children for whom we expect to receive a score and any unexpected scores to ensure more accurate data is collected.
17. The 2009 data shows that there are still children subject to freeing orders even though applications for freeing orders could not be made on or after 30 December 2005 as they were replaced by placement orders. Such high numbers of children subject to freeing orders four years after they have come to an end are not expected. Further guidance on the use of freeing orders has been included in our guidance notes. Stricter validation rules for the 2009-10 collection will also be included to make sure that these figures are not as a result of data quality issues.
18. This release has reported that there were 59,400 children looked after at 31 March 2008, a slight reduction of 0.2 per cent compared with the figure of 59,500 reported in last year's publication. Such revisions to previously published data are as a result of amendments and corrections made by Local Authorities to their historical data. Records from the year ending 31 March 2005 can be amended directly by Local Authorities. Common amendments include correcting episode information and including missing records. Changes required to records prior to 2005 and corrections to dates of birth, sex or ethnicity for all historical records can only be made by DCSF.
19. We encountered problems with the calculation of NI 66 with our 2008 Statistical First Release and, as a result, were unable to publish that indicator within last year's release. We have now made a decision about how to proceed with the methodology for calculating this indicator and have included a four year time series of this indication within this Statistical First Release.

## **Related Publications**

20. Details of statistics on looked after children published by other countries in the UK can be found below.

### ***Scotland***

Children Looked After Statistics are produced annually by the Scottish Government. The most recent data published on 26<sup>th</sup> November 2008 can be found at the following link:

<http://www.scotland.gov.uk/Topics/Statistics/Browse/Children/PubChildrenLookedAfter>

## ***Wales***

Statistics on Children Looked After in Wales are produced annually by the Local Government Data Unit and the Welsh Assembly Government. Data for the period up to the end of March 2009 were released on 26th August 2009 and can be found at the following link:

<http://wales.gov.uk/topics/statistics/headlines/health2009/hdw200908262/?lang=en>

## ***Northern Ireland:***

The Children Order Statistical Bulletin and Children Order Statistical Tables are produced annually by the Department of Health, Social Services and Public Safety and include information on looked after children in Northern Ireland. The most recent data published in 2<sup>nd</sup> March 2009 can be found at the following link:

[http://www.dhsspsni.gov.uk/index/stats\\_research/stats-cib/stats-cib\\_pubs/stats-cib-children\\_order\\_bulletin.htm](http://www.dhsspsni.gov.uk/index/stats_research/stats-cib/stats-cib_pubs/stats-cib-children_order_bulletin.htm)

## **A National Statistics publication**

21. National Statistics are produced to high professional standards set out in the National Statistics Code of Practice. They undergo regular quality assurance reviews to ensure that they meet customer needs. They are produced free from any political interference. We want to engage with users of our statistics and we invite you to send your comments on the publication to:

Martin Hill      email: [martin.hill@dcsh.gov.uk](mailto:martin.hill@dcsh.gov.uk)      Tel: 0207 340 7933

## **ENQUIRIES**

Enquiries about the figures contained in this press release should be addressed to:

Data Services Group  
Department for Children, Schools and Families  
Sanctuary Buildings  
Great Smith Street  
LONDON  
SW1P 3BT  
Email: [cla.stats@dcsh.gov.uk](mailto:cla.stats@dcsh.gov.uk)

Press enquiries should be made to the Department's Press Office at:

Press Office  
Department for Children, Schools and Families  
Sanctuary Buildings  
Great Smith Street  
LONDON  
SW1P 3BT  
Telephone Number: 020 7925 6789

## Statistical First Release 2008-2009

### ENGLAND SUMMARY TABLES

#### Trends - Children looked after at 31 March

[Table A1:](#) Children looked after at 31 March by gender, age at 31 March, category of need, and ethnic origin.

**Years ending** 31 March 2005 to 2009

**Coverage** England

[Table A2:](#) Children looked after at 31 March by legal status.

**Years ending** 31 March 2005 to 2009

**Coverage** England

[Table A3:](#) Children looked after at 31 March by placement.

**Years ending** 31 March 2005 to 2009

**Coverage** England

[Table A4:](#) Unaccompanied Asylum Seeking Children looked after at 31 March by gender, age at 31 March, category of need and ethnic origin.

**Years ending** 31 March 2005 to 2009

**Coverage** England

[Table A5:](#) Mothers aged 12 years and over looked after at 31 March by age at 31 March, age at birth of first child, category of need, ethnic origin and placement.

**Years ending** 31 March 2005 to 2009

**Coverage** England

#### Trends - Children looked after during the year ending 31 March

[Table B1:](#) Children looked after during the year under at least one agreed series of short term placements by gender, by age at the end of the latest period of care or at 31 March if child is still covered by an agreement, by placement, and by category of need for years ending 31 March.

**Years ending** 31 March 2005 to 2009

**Coverage** England

#### Trends - Children who started to be looked after in the years ending 31 March

[Table C1:](#) Children who started to be looked after during the years ending 31 March by gender, age on starting, category of need and ethnic origin.

**Years ending** 31 March 2005 to 2009

**Coverage** England

[Table C2:](#) Children who started to be looked after during the years ending 31 March by legal status on starting.

**Years ending** 31 March 2005 to 2009

**Coverage** England

[Table C3:](#) Children who started to be looked after during the years ending 31 March by placement on starting.

**Years ending** 31 March 2005 to 2009

**Coverage** England

#### Trends - Children who ceased to be looked after in the years ending 31 March

[Table D1:](#) Children who ceased to be looked after during the years ending 31 March by gender, age on ceasing, reason episode ceased, category of need and ethnic origin.

**Years ending** 31 March 2005 to 2009

**Coverage** England

[Table D2:](#) Children who ceased to be looked after during the years ending 31 March by placement on ceasing.

**Years ending** 31 March 2005 to 2009

**Coverage** England

[Table D3:](#) Mothers aged 12 years and over who ceased to be looked after during the years ending 31 March by age on ceasing, age at birth of first child, category of need and ethnic origin.

**Years ending** 31 March 2005 to 2009

**Coverage** England

#### Trends - Looked after children adopted in the years ending 31 March

[Table E1:](#) Looked after children adopted during the years ending 31 March by gender, age at adoption, ethnic origin, category of need, final legal status, duration of final period of care and age on starting final period of care.

**Years ending** 31 March 2005 to 2009

**Coverage** England

[Table E2:](#) Children looked after who were adopted during the years ending 31 March by number of adopters, legal status of adopters and gender of adopters.

**Years ending** 31 March 2007 to 2009

**Coverage** England

#### Trends - Care leavers - Children who ceased to be looked after aged 16 and over during the years ending 31 March

[Table F1:](#) Children aged 16 years and over who ceased to be looked after during the years ending 31 March by gender, age on ceasing, ethnic origin, final placement and qualifications.

**Years ending** 31 March 2005 to 2009

**Coverage** England

#### Trends - Former care leavers - 19 years old former care leavers in the year ending 31 March

[Table G1:](#) Children now aged 19 years who were looked after on 1 April 2001 to April 2005 then aged 16 years (in their 17th year) by gender, activity and accommodation

**Years ending** 31 March 2005 to 2009

**Coverage** England

**Table A1: Children looked after at 31 March by gender, age at 31 March, category of need, and ethnic origin<sup>1,2</sup>**

**Years ending 31 March 2005 to 2009**

**Coverage: England**

rates per 10,000 children under 18 years

	2005	2006	2007	2008	2009					
<b>All children looked after at 31 March<sup>1</sup></b>	<b>61,000</b>	<b>60,300</b>	<b>60,000</b>	<b>59,400</b>	<b>60,900</b>					
<b>Rates per 10,000 children under 18 years</b>	<b>55</b>	<b>55</b>	<b>55</b>	<b>54</b>	<b>55</b>					
	numbers					percentages				
	2005	2006	2007	2008	2009	2005	2006	2007	2008	2009
<b>All children looked after at 31 March<sup>1</sup></b>	<b>61,000</b>	<b>60,300</b>	<b>60,000</b>	<b>59,400</b>	<b>60,900</b>	<b>100</b>	<b>100</b>	<b>100</b>	<b>100</b>	<b>100</b>
<b>Gender</b>	<b>61,000</b>	<b>60,300</b>	<b>60,000</b>	<b>59,400</b>	<b>60,900</b>	<b>100</b>	<b>100</b>	<b>100</b>	<b>100</b>	<b>100</b>
Male	33,800	33,400	33,400	33,400	34,600	55	55	56	56	57
Female	27,300	26,900	26,600	26,000	26,300	45	45	44	44	43
<b>Age at 31 March (years)</b>	<b>61,000</b>	<b>60,300</b>	<b>60,000</b>	<b>59,400</b>	<b>60,900</b>	<b>100</b>	<b>100</b>	<b>100</b>	<b>100</b>	<b>100</b>
Under 1	2,800	2,900	3,000	2,900	3,200	5	5	5	5	5
1 to 4	8,600	8,400	8,700	9,000	9,500	14	14	15	15	16
5 to 9	12,100	11,500	10,900	10,400	10,500	20	19	18	17	17
10 to 15	26,600	26,200	25,500	24,900	24,800	44	43	43	42	41
16 and over	10,800	11,300	11,800	12,200	12,900	18	19	20	20	21
<b>Category of need<sup>3</sup></b>	<b>61,000</b>	<b>60,300</b>	<b>60,000</b>	<b>59,400</b>	<b>60,900</b>	<b>100</b>	<b>100</b>	<b>100</b>	<b>100</b>	<b>100</b>
Abuse or neglect	38,200	37,600	37,200	36,700	37,100	63	62	62	62	61
Child's disability	2,400	2,400	2,300	2,300	2,200	4	4	4	4	4
Parents illness or disability	3,300	3,200	3,000	2,800	2,700	5	5	5	5	4
Family in acute stress	4,400	4,500	4,800	4,900	5,300	7	7	8	8	9
Family dysfunction	6,100	6,100	6,300	6,300	6,800	10	10	11	11	11
Socially unacceptable behaviour	1,500	1,300	1,300	1,200	1,200	2	2	2	2	2
Low income	110	110	110	130	130	0	0	0	0	0
Absent parenting	5,000	5,100	5,000	5,100	5,400	8	8	8	9	9
<b>Ethnic origin</b>	<b>61,000</b>	<b>60,300</b>	<b>60,000</b>	<b>59,400</b>	<b>60,900</b>	<b>100</b>	<b>100</b>	<b>100</b>	<b>100</b>	<b>100</b>
<b>White</b>										
White British	45,900	45,000	44,600	43,800	44,500	75	75	74	74	73
White Irish	500	450	410	420	410	1	1	1	1	1
Any other White background	1,700	1,600	1,500	1,500	1,400	3	3	2	3	2
Traveller of Irish Heritage <sup>4</sup>	x	x	x	x	10	x	x	x	x	0
Gypsy/Roma <sup>4</sup>	x	x	x	x	20	x	x	x	x	0
<b>Mixed</b>										
White and Black Caribbean	2,000	2,000	2,000	2,000	1,900	3	3	3	3	3
White and Black African	450	450	470	480	480	1	1	1	1	1
White and Asian	740	760	800	760	740	1	1	1	1	1
Any other mixed background	2,000	2,000	2,000	1,900	2,000	3	3	3	3	3
<b>Asian or Asian British</b>										
Indian	280	300	290	300	300	0	0	0	1	0
Pakistani	570	610	650	670	670	1	1	1	1	1
Bangladeshi	270	280	280	300	350	0	0	0	1	1
Any other Asian background	680	930	1,100	1,400	1,700	1	2	2	2	3
<b>Black or Black British</b>										
Caribbean	1,600	1,700	1,600	1,600	1,500	3	3	3	3	3
African	2,400	2,400	2,300	2,100	2,100	4	4	4	4	3
Any other Black background	860	840	800	770	790	1	1	1	1	1
<b>Other ethnic groups</b>										
Chinese	120	120	130	130	140	0	0	0	0	0
Any other ethnic group	890	1,000	1,100	1,300	1,700	1	2	2	2	3
<b>Other</b>										
Refused <sup>4</sup>	x	x	x	x	30	x	x	x	x	0
Information not yet available <sup>4</sup>	x	x	x	x	180	x	x	x	x	0

Source: SSDA 903

- Figures exclude children looked after under an agreed series of short term placements.
- Historical data may differ from older publications. This is mainly due to the implementation of amendments and corrections sent by some local authorities after the publication date of previous materials.
- The most applicable category of the eight "Need Codes" at the time the child was taken into care rather than necessarily the entire reason they are looked after.
- Ethnic origin classification collected for the first time in 2009.

**Table A2: Children looked after at 31 March by legal status<sup>1,2</sup>**  
**Years ending 31 March 2005 to 2009**  
**Coverage: England**

Legal Status at 31 March	numbers and percentages									
	numbers					percentages				
	2005	2006	2007	2008	2009	2005	2006	2007	2008	2009
<b>All children looked after at 31 March<sup>1</sup></b>	<b>61,000</b>	<b>60,300</b>	<b>60,000</b>	<b>59,400</b>	<b>60,900</b>	<b>100</b>	<b>100</b>	<b>100</b>	<b>100</b>	<b>100</b>
<b>Care Orders</b>	<b>39,800</b>	<b>39,600</b>	<b>38,500</b>	<b>36,900</b>	<b>36,200</b>	<b>65</b>	<b>66</b>	<b>64</b>	<b>62</b>	<b>59</b>
Interim care orders	9,000	9,100	9,300	8,900	9,800	15	15	16	15	16
Full care orders	30,800	30,500	29,200	28,000	26,400	51	51	49	47	43
<b>Freed for adoption<sup>3</sup></b>	<b>2,600</b>	<b>2,200</b>	<b>940</b>	<b>610</b>	<b>450</b>	<b>4</b>	<b>4</b>	<b>2</b>	<b>1</b>	<b>1</b>
<b>Placement Order granted<sup>4</sup></b>	<b>x</b>	<b>530</b>	<b>3,100</b>	<b>4,300</b>	<b>4,200</b>	<b>x</b>	<b>1</b>	<b>5</b>	<b>7</b>	<b>7</b>
<b>Voluntary agreements under S20 CA 1989 (single placements)</b>	<b>18,400</b>	<b>17,800</b>	<b>17,300</b>	<b>17,400</b>	<b>19,800</b>	<b>30</b>	<b>29</b>	<b>29</b>	<b>29</b>	<b>32</b>
<b>Detained for child protection</b>	<b>50</b>	<b>80</b>	<b>30</b>	<b>30</b>	<b>70</b>	<b>0</b>	<b>0</b>	<b>0</b>	<b>0</b>	<b>0</b>
Police protection	10	30	10	10	20	0	0	0	0	0
Emergency protection orders	40	50	20	10	50	0	0	0	0	0
Under Child Assessment Order	0	0	0	0	0	0	0	0	0	0
<b>Youth Justice legal statuses</b>	<b>180</b>	<b>170</b>	<b>200</b>	<b>180</b>	<b>200</b>	<b>0</b>	<b>0</b>	<b>0</b>	<b>0</b>	<b>0</b>
On remand or committed for trial	170	150	180	170	180	0	0	0	0	0
Detained under PACE <sup>5</sup>	0	0	0	0	-	0	0	0	0	-
Supervision order	10	20	20	10	10	0	0	0	0	0

Source: SSDA903

1. Figures exclude children looked after under an agreed series of short term placements.
2. Historical data may differ from older publications. This is mainly due to the implementation of amendments and corrections sent by some local authorities after the publication date of previous materials.
3. No new applications for freeing orders may be made on or after 30 December 2005.
4. Placement orders came into force on 30 December 2005.
5. Children detained in local authority accommodation under section 38(6) of the Police and Criminal Evidence Act 1984.



**Table A3: Children looked after at 31 March by placement<sup>1,2</sup>**  
**Years ending 31 March 2005 to 2009**  
**Coverage: England**

Placement at 31 March	numbers and percentages									
	numbers					percentages				
	2005	2006	2007	2008	2009	2005	2006	2007	2008	2009
<b>All children looked after at 31 March<sup>1</sup></b>	<b>61,000</b>	<b>60,300</b>	<b>60,000</b>	<b>59,400</b>	<b>60,900</b>	<b>100</b>	<b>100</b>	<b>100</b>	<b>100</b>	<b>100</b>
<b>Foster placements</b>	<b>41,400</b>	<b>41,700</b>	<b>42,100</b>	<b>42,000</b>	<b>44,200</b>	<b>68</b>	<b>69</b>	<b>70</b>	<b>71</b>	<b>73</b>
Foster placement inside Council boundary										
With relative or friend	5,600	5,300	5,100	5,000	4,900	9	9	9	8	8
With other foster carer provided by Council	20,300	19,900	20,000	19,700	20,400	33	33	33	33	33
arranged through agency	1,600	2,000	2,400	2,800	3,200	3	3	4	5	5
Foster placement outside Council boundary										
With relative or friend	2,000	2,100	1,900	1,900	1,900	3	3	3	3	3
With other foster carer provided by Council	5,200	5,400	5,300	5,200	6,100	9	9	9	9	10
arranged through agency <sup>3</sup>	6,600	7,000	7,400	7,500	7,700	11	12	12	13	13
<b>Placed for adoption<sup>4</sup></b>	<b>3,400</b>	<b>3,000</b>	<b>2,700</b>	<b>2,800</b>	<b>2,500</b>	<b>6</b>	<b>5</b>	<b>5</b>	<b>5</b>	<b>4</b>
Placed for adoption with consent with current foster carer (under S19 AA 2002)	330	330	130	120	110	1	1	0	0	0
Placed for adoption with placement order with current foster carer (under S21 AA 2002)			160	180	170			0	0	0
Placed for adoption with consent not with current foster carer (under S19 AA 2002)	3,100	2,700	750	640	440	5	4	1	1	1
Placed for adoption with placement order not with current foster carer (under S21 AA 2002)			1,600	1,900	1,700			3	3	3
<b>Placement with parents</b>	<b>5,800</b>	<b>5,400</b>	<b>5,100</b>	<b>4,600</b>	<b>4,100</b>	<b>9</b>	<b>9</b>	<b>9</b>	<b>8</b>	<b>7</b>
<b>Other placement in the community</b>	<b>1,500</b>	<b>1,700</b>	<b>1,700</b>	<b>1,900</b>	<b>1,900</b>	<b>2</b>	<b>3</b>	<b>3</b>	<b>3</b>	<b>3</b>
Living independently	1,500	1,700	1,700	1,900	1,900	2	3	3	3	3
Residential employment	10	-	-	-	-	0	-	-	-	-
<b>Secure units, children's homes and hostels</b>	<b>7,000</b>	<b>6,600</b>	<b>6,500</b>	<b>6,200</b>	<b>6,200</b>	<b>11</b>	<b>11</b>	<b>11</b>	<b>10</b>	<b>10</b>
Secure unit inside Council boundary	30	20	30	20	20	0	0	0	0	0
Secure unit outside Council boundary <sup>5</sup>	220	170	170	160	200	0	0	0	0	0
Homes and hostels subject to Children's Homes regulations inside Council boundary	3,100	3,000	2,900	2,900	2,800	5	5	5	5	5
outside Council boundary	2,600	2,300	2,300	2,100	2,200	4	4	4	4	4
Homes and hostels <i>not</i> subject to Children's Homes regulations	1,100	1,100	1,100	1,000	1,000	2	2	2	2	2
<b>Other residential settings</b>	<b>560</b>	<b>570</b>	<b>590</b>	<b>570</b>	<b>720</b>	<b>1</b>	<b>1</b>	<b>1</b>	<b>1</b>	<b>1</b>
Residential care homes	210	240	230	250	320	0	0	0	0	1
NHS Trust providing medical/nursing care	90	80	70	80	90	0	0	0	0	0
Family centre or mother and baby unit	150	120	140	100	160	0	0	0	0	0
Young offenders institution or prison	110	140	150	140	140	0	0	0	0	0
<b>Residential schools</b>	<b>1,100</b>	<b>1,100</b>	<b>1,100</b>	<b>1,100</b>	<b>1,000</b>	<b>2</b>	<b>2</b>	<b>2</b>	<b>2</b>	<b>2</b>
<b>Missing - Absent for more than 24 hours from agreed placement</b>	<b>140</b>	<b>140</b>	<b>150</b>	<b>130</b>	<b>120</b>	<b>0</b>	<b>0</b>	<b>0</b>	<b>0</b>	<b>0</b>
In refuge (section 51 of Children Act, 1989)	0	-	-	-	-	0	-	-	-	-
Whereabouts known (not in refuge)	20	20	30	40	30	0	0	0	0	0
Whereabouts unknown	120	120	120	90	90	0	0	0	0	0
<b>Other placement</b>	<b>110</b>	<b>120</b>	<b>90</b>	<b>80</b>	<b>120</b>	<b>0</b>	<b>0</b>	<b>0</b>	<b>0</b>	<b>0</b>

Source: SSDA903

- Figures exclude children looked after under an agreed series of short term placements.
- Historical data may differ from older publications. This is mainly due to the implementation of amendments and corrections sent by some local authorities after the publication date of previous materials.
- This category includes new placement provider codes "Other Local Authority provision", "private provision" and "voluntary/third sector provision" for 2009 only.
- Since 2004-05 placed for adoption has been disaggregated by whether the placement is or is not with current foster carer. Since 2006-07 placement also disaggregated according to whether consent was given or a placement order sought.
- There are currently only 18 secure units operating in England therefore most placements will inevitably be outside the council boundary.

**Table A4: Unaccompanied Asylum Seeking Children looked after at 31 March by gender, age at 31 March, category of need and ethnic origin<sup>1,2</sup>**  
**Years ending 31 March 2005 to 2009**  
**Coverage: England**

	numbers and percentages									
	numbers					percentages				
	2005	2006	2007	2008	2009	2005	2006	2007	2008	2009
<b>Unaccompanied Asylum Seeking Children looked after at 31 March<sup>1</sup></b>	<b>3,200</b>	<b>3,400</b>	<b>3,400</b>	<b>3,500</b>	<b>3,700</b>	<b>100</b>	<b>100</b>	<b>100</b>	<b>100</b>	<b>100</b>
<b>Gender</b>	<b>3,200</b>	<b>3,400</b>	<b>3,400</b>	<b>3,500</b>	<b>3,700</b>	<b>100</b>	<b>100</b>	<b>100</b>	<b>100</b>	<b>100</b>
Male	2,200	2,400	2,600	2,800	3,200	69	70	76	81	87
Female	990	1,000	820	670	490	31	30	24	19	13
<b>Age at 31 March (years)</b>	<b>3,200</b>	<b>3,400</b>	<b>3,400</b>	<b>3,500</b>	<b>3,700</b>	<b>100</b>	<b>100</b>	<b>100</b>	<b>100</b>	<b>100</b>
Under 16	1,200	1,100	1,100	1,200	1,200	38	34	34	33	33
16 and over	2,000	2,200	2,200	2,300	2,500	62	66	66	67	67
<b>Category of need<sup>3</sup></b>	<b>3,200</b>	<b>3,400</b>	<b>3,400</b>	<b>3,500</b>	<b>3,700</b>	<b>100</b>	<b>100</b>	<b>100</b>	<b>100</b>	<b>100</b>
Abuse or neglect	90	80	70	50	50	3	2	2	2	1
Child's disability	-	-	-	-	0	-	-	-	-	0
Parents illness or disability	-	-	-	-	-	-	-	-	-	-
Family in acute stress	10	10	10	20	20	0	0	0	1	1
Family dysfunction	10	10	20	20	20	0	0	0	0	1
Socially unacceptable behaviour	10	10	-	10	10	0	0	-	-	0
Low income	10	10	10	10	20	0	0	0	0	0
Absent parenting	3,000	3,200	3,300	3,400	3,600	96	96	97	97	97
<b>Ethnic origin</b>	<b>3,200</b>	<b>3,400</b>	<b>3,400</b>	<b>3,500</b>	<b>3,700</b>	<b>100</b>	<b>100</b>	<b>100</b>	<b>100</b>	<b>100</b>
White										
White British	-	10	10	10	-	-	0	0	0	-
White Irish	0	0	0	0	0	0	0	0	0	0
Any other White background	690	540	500	490	370	22	16	15	14	10
Traveller of Irish Heritage <sup>4</sup>	x	x	x	x	0	x	x	x	x	0
Gypsy/Roma <sup>4</sup>	x	x	x	x	-	x	x	x	x	-
Mixed										
White and Black Caribbean	-	-	-	-	-	-	-	-	-	-
White and Black African	10	10	10	10	10	0	0	0	0	0
White and Asian	10	10	10	10	10	0	0	0	0	0
Any other mixed background	40	30	10	10	10	1	1	0	0	0
Asian or Asian British										
Indian	20	20	20	30	40	1	1	1	1	1
Pakistani	50	60	90	90	80	1	2	3	2	2
Bangladeshi	20	20	20	30	30	1	1	1	1	1
Any other Asian background	470	660	800	1,000	1,200	15	19	24	30	33
Black or Black British										
Caribbean	10	10	10	-	-	0	0	0	-	-
African	1,200	1,200	1,000	840	630	37	35	31	24	17
Any other Black background	100	120	90	80	80	3	4	3	2	2
Other Ethnic groups										
Chinese	60	70	80	90	80	2	2	2	3	2
Any other ethnic group	500	630	690	780	1,100	16	19	20	22	30
Other										
Refused <sup>4</sup>	x	x	x	x	-	x	x	x	x	-
Information not yet available <sup>4</sup>	x	x	x	x	40	x	x	x	x	1

Source SSDA903

1. Figures exclude children looked after under an agreed series of short term placements.
2. Historical data may differ from older publications. This is mainly due to the implementation of amendments and corrections sent by some local authorities after the publication date of previous materials.
3. The most applicable category of the eight "Need Codes" at the time the child was taken into care rather than necessarily the entire reason they are looked after.
4. Ethnic origin classification collected for the first time in 2009.

**Table A5: Mothers aged 12 years old and over looked after at 31 March by age at 31 March, age at birth of first child category of need, ethnic origin and placement<sup>1,2</sup>**  
**Years ending 31 March 2005 to 2009**  
**Coverage: England**

	numbers and percentages									
	numbers					percentages				
	2005	2006	2007	2008	2009	2005	2006	2007	2008	2009
<b>All females looked after at 31 March<sup>1</sup></b>	<b>27,300</b>	<b>26,900</b>	<b>26,600</b>	<b>26,000</b>	<b>26,300</b>					
<b>All females aged 12 years old and over looked after at 31 March<sup>1</sup></b>	<b>13,500</b>	<b>13,600</b>	<b>13,300</b>	<b>13,000</b>	<b>13,000</b>	<b>100</b>	<b>100</b>	<b>100</b>	<b>100</b>	<b>100</b>
<b>All mothers aged 12 years old and over looked after at 31 March<sup>1</sup></b>	<b>290</b>	<b>300</b>	<b>360</b>	<b>320</b>	<b>320</b>	<b>100</b>	<b>100</b>	<b>100</b>	<b>100</b>	<b>100</b>
<b>Age at 31 March (years)</b>	<b>290</b>	<b>300</b>	<b>360</b>	<b>320</b>	<b>320</b>	<b>100</b>	<b>100</b>	<b>100</b>	<b>100</b>	<b>100</b>
12 to 14	10	10	10	10	10	3	2	3	2	4
15	40	40	40	40	30	15	12	12	12	8
16	80	100	110	90	90	28	32	30	28	29
17	160	160	200	190	190	55	54	55	58	58
18 and over	0	0	0	0	0	0	0	0	0	0
<b>Age at birth of first child (years)<sup>3</sup></b>	<b>x</b>	<b>300</b>	<b>360</b>	<b>320</b>	<b>320</b>	<b>x</b>	<b>100</b>	<b>100</b>	<b>100</b>	<b>100</b>
12 to 14	x	50	50	40	40	x	17	14	14	14
15	x	90	90	90	90	x	31	26	28	27
16	x	100	110	120	120	x	33	30	39	36
17	x	60	60	60	70	x	19	16	19	22
18 and over	x	0	0	0	0	x	0	0	0	0
Birth date not reported	x	-	50	0	-	x	-	14	0	-
<b>Category of need<sup>4</sup></b>	<b>290</b>	<b>300</b>	<b>360</b>	<b>320</b>	<b>320</b>	<b>100</b>	<b>100</b>	<b>100</b>	<b>100</b>	<b>100</b>
Abuse or neglect	140	150	180	170	160	48	52	51	53	52
Child's disability	-	-	-	-	0	-	-	-	-	0
Parents illness or disability	10	10	10	10	20	4	2	2	4	5
Family in acute stress	30	30	30	30	30	10	10	8	10	8
Family dysfunction	50	50	70	50	60	17	16	18	17	18
Socially unacceptable behaviour	10	10	10	10	10	5	4	3	3	3
Low income	-	0	-	-	0	-	0	-	-	0
Absent parenting	50	50	60	40	50	16	15	18	13	15
<b>Ethnic origin</b>	<b>290</b>	<b>300</b>	<b>360</b>	<b>320</b>	<b>320</b>	<b>100</b>	<b>100</b>	<b>100</b>	<b>100</b>	<b>100</b>
White	190	180	220	190	210	63	61	61	60	65
Mixed	20	30	30	40	30	7	9	9	11	10
Asian or Asian British	10	10	10	10	10	2	3	3	3	3
Black or Black British	70	80	90	70	60	25	26	25	23	19
Other Ethnic groups	10	-	10	10	10	2	-	3	3	3
<b>Placement</b>	<b>290</b>	<b>300</b>	<b>360</b>	<b>320</b>	<b>320</b>	<b>100</b>	<b>100</b>	<b>100</b>	<b>100</b>	<b>100</b>
Foster placements	110	130	140	140	160	37	45	39	45	51
Placed for adoption	0	0	0	0	0	0	0	0	0	0
Placed with parents	20	20	20	30	20	8	7	5	9	5
Placed in the community	80	80	120	80	80	27	27	32	26	26
Secure units, children's homes and hostels	60	40	60	50	40	20	15	16	17	12
Other residential settings	20	20	20	10	10	7	5	6	2	4
Residential schools	0	0	0	0	-	0	0	0	0	-
Missing - Absent for more than 24 hours from agreed placement	-	-	10	-	-	-	-	1	-	-
Other placement	-	-	-	-	-	-	-	-	-	-

Source: SSDA903

1. Figures exclude children looked after under an agreed series of short term placements.
2. Historical data may differ from older publications. This is mainly due to the implementation of amendments and corrections sent by some local authorities after the publication date of previous materials.
3. Data on the first child's date of birth started to be collected in 2005-06.
4. The most applicable category of the eight "Need Codes" at the time the child was taken into care rather than necessarily the entire reason they are looked after.

**Table B1: Children looked after during the year under at least one agreed series of short term placements by gender, by age at the end of the latest period of care or at 31 March if child is still covered by an agreement, by placement, and by category of need for years ending 31 March<sup>1,2,3</sup>**  
**Years ending 31 March 2005 to 2009**  
**Coverage: England**

	numbers and percentages									
	numbers					percentages				
	2005	2006	2007	2008	2009	2005	2006	2007	2008	2009
<b>All Children looked after during the year under at least one agreed series of short term placements<sup>1,2,3</sup></b>	<b>11,800</b>	<b>11,400</b>	<b>11,400</b>	<b>11,000</b>	<b>10,400</b>	<b>100</b>	<b>100</b>	<b>100</b>	<b>100</b>	<b>100</b>
<b>Gender</b>	<b>11,800</b>	<b>11,400</b>	<b>11,400</b>	<b>11,000</b>	<b>10,400</b>	<b>100</b>	<b>100</b>	<b>100</b>	<b>100</b>	<b>100</b>
Male	7,600	7,400	7,300	7,200	6,800	64	65	64	65	65
Female	4,200	4,000	4,000	3,800	3,600	36	35	36	35	35
<b>Age (years)<sup>4</sup></b>	<b>11,800</b>	<b>11,400</b>	<b>11,400</b>	<b>11,000</b>	<b>10,400</b>	<b>100</b>	<b>100</b>	<b>100</b>	<b>100</b>	<b>100</b>
Under 1	80	40	40	30	50	1	0	0	0	0
1 to 4	410	350	320	270	230	3	3	3	2	2
5 to 9	2,200	2,000	1,900	1,700	1,500	19	18	16	16	15
10 to 15	6,500	6,300	6,300	6,100	5,700	55	56	55	55	55
16 and over	2,600	2,700	2,800	2,900	2,900	22	23	25	26	28
Average age (yrs : months)	12:8	12:11	13:1	13:2	13:4					
<b>Placement<sup>5</sup></b>	<b>11,800</b>	<b>11,400</b>	<b>11,400</b>	<b>11,000</b>	<b>10,400</b>	<b>100</b>	<b>100</b>	<b>100</b>	<b>100</b>	<b>100</b>
Foster placements	5,000	4,600	4,300	4,000	3,600	42	40	38	36	34
Placed for adoption	0	0	0	0	-	0	0	0	0	-
Placement with parents	80	100	80	100	90	1	1	1	1	1
Other placement in the community	-	10	0	-	-	-	0	0	-	-
Secure units, children's homes and hostels	5,800	5,800	6,000	5,800	5,700	49	51	52	53	55
Other residential settings	620	580	730	840	780	5	5	6	8	7
Residential schools	160	170	190	220	250	1	1	2	2	2
Missing - Absent for more than 24 hours from agreed placement	-	0	0	0	0	-	0	0	0	0
Other placement	110	120	100	20	30	1	1	1	0	0
<b>Category of need<sup>5,6</sup></b>	<b>11,800</b>	<b>11,400</b>	<b>11,400</b>	<b>11,000</b>	<b>10,400</b>	<b>100</b>	<b>100</b>	<b>100</b>	<b>100</b>	<b>100</b>
Abuse or neglect	610	550	580	550	550	5	5	5	5	5
Child's disability	9,300	9,100	9,100	8,900	8,600	79	80	80	81	82
Parents illness or disability	370	340	290	230	200	3	3	3	2	2
Family in acute stress	850	800	740	760	640	7	7	7	7	6
Family dysfunction	480	450	450	410	390	4	4	4	4	4
Socially unacceptable behaviour	100	110	90	50	50	1	1	1	0	1
Low income	10	10	10	10	10	0	0	0	0	0
Absent parenting	60	70	60	70	30	1	1	1	1	0

Source: SSDA903

1. Children looked after at any time during the year.
2. Historical data may differ from older publications. This is mainly due to the implementation of amendments and corrections sent by some local authorities after the publication date of previous materials.
3. Children looked after under one or more agreed series of short term placements at any time during the years ending 31 March. Some will also have been looked after under other legal statuses during the year, and will therefore be included in other tables.
4. Age at the end of the latest episode of care, or at 31 March if child is still covered by an agreement.
5. Placement and category of need relate to child's latest episode of care during the year.
6. The most applicable category of the eight "Need Codes" (i.e. the reason why the child is receiving social services) at the time the child was taken into care rather than necessarily the reason they are looked after.

**Table C1: Children who started to be looked after during the years ending 31 March by gender, age on starting, category of need and ethnic origin<sup>1,2,3</sup>**  
**Years ending 31 March 2005 to 2009**  
**Coverage: England**

	numbers and percentages									
	numbers					percentages				
	2005	2006	2007	2008	2009	2005	2006	2007	2008	2009
<b>All children who started to be looked after<sup>1,2</sup></b>	<b>25,000</b>	<b>24,600</b>	<b>24,000</b>	<b>23,300</b>	<b>25,400</b>	<b>100</b>	<b>100</b>	<b>100</b>	<b>100</b>	<b>100</b>
<b>Gender</b>	<b>25,000</b>	<b>24,600</b>	<b>24,000</b>	<b>23,300</b>	<b>25,400</b>	<b>100</b>	<b>100</b>	<b>100</b>	<b>100</b>	<b>100</b>
Male	13,300	13,300	13,200	12,800	14,300	53	54	55	55	56
Female	11,600	11,300	10,800	10,500	11,100	47	46	45	45	44
<b>Age on starting (years)</b>	<b>25,000</b>	<b>24,600</b>	<b>24,000</b>	<b>23,300</b>	<b>25,400</b>	<b>100</b>	<b>100</b>	<b>100</b>	<b>100</b>	<b>100</b>
Under 1	4,300	4,300	4,400	4,400	4,700	17	18	18	19	19
1 to 4	4,500	4,300	4,400	4,300	4,800	18	17	18	19	19
5 to 9	4,300	4,100	3,900	3,500	4,000	17	16	16	15	16
10 to 15	10,100	9,800	9,300	8,700	9,100	40	40	39	38	36
16 and over	1,700	2,100	2,000	2,300	2,700	7	9	8	10	11
<b>Category of need<sup>4</sup></b>	<b>25,000</b>	<b>24,600</b>	<b>24,000</b>	<b>23,300</b>	<b>25,400</b>	<b>100</b>	<b>100</b>	<b>100</b>	<b>100</b>	<b>100</b>
Abuse or neglect	12,100	11,500	11,400	11,300	12,500	48	47	48	48	49
Child's disability	790	830	740	690	660	3	3	3	3	3
Parents illness or disability	1,600	1,500	1,300	1,200	1,200	7	6	5	5	5
Family in acute stress	2,900	2,800	2,800	2,700	2,800	12	11	12	12	11
Family dysfunction	3,100	3,200	3,300	3,100	3,600	13	13	14	13	14
Socially unacceptable behaviour	1,400	1,300	1,200	1,100	1,100	5	5	5	5	4
Low income	80	70	80	60	70	0	0	0	0	0
Absent parenting	3,000	3,400	3,100	3,200	3,500	12	14	13	14	14
<b>Ethnic origin</b>	<b>25,000</b>	<b>24,600</b>	<b>24,000</b>	<b>23,300</b>	<b>25,400</b>	<b>100</b>	<b>100</b>	<b>100</b>	<b>100</b>	<b>100</b>
<b>White</b>										
White British	17,400	16,500	16,100	15,300	16,100	70	67	67	66	64
White Irish	160	150	140	130	130	1	1	1	1	1
Any other White background	840	800	860	890	720	3	3	4	4	3
Traveller of Irish Heritage <sup>5</sup>	x	x	x	x	10	x	x	x	x	0
Gypsy/Roma <sup>5</sup>	x	x	x	x	20	x	x	x	x	0
<b>Mixed</b>										
White and Black Caribbean	690	690	620	590	590	3	3	3	3	2
White and Black African	200	200	190	190	210	1	1	1	1	1
White and Asian	270	280	310	250	310	1	1	1	1	1
Any other mixed background	770	770	730	750	790	3	3	3	3	3
<b>Asian or Asian British</b>										
Indian	120	160	140	170	170	0	1	1	1	1
Pakistani	350	300	340	320	400	1	1	1	1	2
Bangladeshi	170	160	170	200	240	1	1	1	1	1
Any other Asian background	560	820	820	1,000	1,300	2	3	3	4	5
<b>Black or Black British</b>										
Caribbean	700	720	630	620	640	3	3	3	3	3
African	1,600	1,700	1,500	1,300	1,400	6	7	6	6	6
Any other Black background	440	450	430	440	440	2	2	2	2	2
<b>Other ethnic groups</b>										
Chinese	70	120	160	140	130	0	0	1	1	1
Any other ethnic group	680	790	880	960	1,400	3	3	4	4	6
<b>Other</b>										
Refused <sup>5</sup>	x	x	x	x	40	x	x	x	x	0
Information not yet available <sup>5</sup>	x	x	x	x	280	x	x	x	x	1

Source: SSDA 903

1. Only the first occasion on which a child started to be looked after in the year has been counted.
2. Figures exclude children looked after under an agreed series of short term placements.
3. Historical data may differ from older publications. This is mainly due to the implementation of amendments and corrections sent by some local authorities after the publication date of previous materials.
4. It is the most applicable category of the eight "Need Codes" at the time the child was taken into care rather than necessarily the entire reason they are looked after.
5. Ethnic origin classification collected for the first time in 2009.

**Table C2: Children who started to be looked after during the years ending 31 March by legal status on starting<sup>1,2,3</sup>**  
**Years ending 31 March 2005 to 2009**  
**Coverage: England**

Legal Status on starting	numbers and percentages									
	numbers					percentages				
	2005	2006	2007	2008	2009	2005	2006	2007	2008	2009
<b>All children who started to be looked after<sup>1,2</sup></b>	<b>25,000</b>	<b>24,600</b>	<b>24,000</b>	<b>23,300</b>	<b>25,400</b>	<b>100</b>	<b>100</b>	<b>100</b>	<b>100</b>	<b>100</b>
<b>Care Order</b>	<b>4,200</b>	<b>4,300</b>	<b>4,800</b>	<b>4,400</b>	<b>4,300</b>	<b>17</b>	<b>17</b>	<b>20</b>	<b>19</b>	<b>17</b>
Interim care order	4,100	4,200	4,700	4,300	4,200	16	17	19	18	17
Full care order	180	130	150	150	130	1	1	1	1	1
<b>Freed for adoption<sup>4</sup></b>	<b>10</b>	<b>10</b>	<b>0</b>	<b>0</b>	<b>0</b>	<b>0</b>	<b>0</b>	<b>0</b>	<b>0</b>	<b>0</b>
<b>Placement Order granted<sup>5</sup></b>	<b>0</b>	<b>-</b>	<b>10</b>	<b>10</b>	<b>20</b>	<b>0</b>	<b>-</b>	<b>0</b>	<b>0</b>	<b>0</b>
<b>Voluntary agreement under S20 CA 1989 (single placements)</b>	<b>16,600</b>	<b>16,200</b>	<b>15,600</b>	<b>15,100</b>	<b>16,700</b>	<b>67</b>	<b>66</b>	<b>65</b>	<b>65</b>	<b>66</b>
<b>Detained for child protection</b>	<b>3,500</b>	<b>3,400</b>	<b>2,900</b>	<b>3,000</b>	<b>3,800</b>	<b>14</b>	<b>14</b>	<b>12</b>	<b>13</b>	<b>15</b>
Police protection	2,100	2,200	2,200	2,400	3,000	8	9	9	10	12
Emergency protection order	1,400	1,200	710	580	740	6	5	3	3	3
Under child assessment order	-	10	10	-	-	-	0	0	-	-
<b>Youth Justice legal statuses</b>	<b>560</b>	<b>660</b>	<b>690</b>	<b>690</b>	<b>540</b>	<b>2</b>	<b>3</b>	<b>3</b>	<b>3</b>	<b>2</b>
On remand or committed for trial	520	610	660	640	510	2	2	3	3	2
Detained under PACE <sup>6</sup>	30	30	20	30	20	0	0	0	0	0
Supervision order	10	20	10	20	10	0	0	0	0	0

Source: SSDA 903

1. Only the first occasion on which a child started to be looked after in the year has been counted.
2. Figures exclude children looked after under an agreed series of short term placements.
3. Historical data may differ from older publications. This is mainly due to the implementation of amendments and corrections sent by some local authorities after the publication date of previous materials.
4. No new applications for freeing orders may be made on or after 30 December 2005.
5. Placement orders came into force on 30 December 2005.
6. Children detained in local authority accommodation under section 38(6) of the Police and Criminal Evidence Act 1984.

**Table C3: Children who started to be looked after during the years ending 31 March by placement<sup>1,2,3</sup>**  
**Years ending 31 March 2005 to 2009**  
**Coverage: England**

Placement on starting	numbers and percentages									
	numbers					percentages				
	2005	2006	2007	2008	2009	2005	2006	2007	2008	2009
<b>Placement on starting</b>										
<b>All Children who started to be looked after<sup>1,2,3</sup></b>	<b>25,000</b>	<b>24,600</b>	<b>24,000</b>	<b>23,300</b>	<b>25,400</b>	<b>100</b>	<b>100</b>	<b>100</b>	<b>100</b>	<b>100</b>
<b>Foster placements</b>	<b>18,900</b>	<b>18,200</b>	<b>17,800</b>	<b>17,500</b>	<b>19,300</b>	<b>76</b>	<b>74</b>	<b>74</b>	<b>75</b>	<b>76</b>
Foster placement inside LA boundary										
With relative or friend	1,500	1,500	1,300	1,500	1,600	6	6	6	6	6
With other foster carer provided by LA	12,500	11,900	11,500	11,000	11,400	50	48	48	47	45
arranged through agency	630	770	940	1,100	1,200	3	3	4	5	5
Foster placements outside LA boundary										
With relative or friend	380	360	290	350	400	2	1	1	2	2
With other foster carer provided by LA	2,100	2,100	2,100	2,100	2,600	8	9	9	9	10
arranged through agency <sup>4</sup>	1,700	1,600	1,700	1,500	2,100	7	6	7	7	8
<b>Placed for adoption<sup>5</sup></b>	<b>10</b>	<b>10</b>	<b>10</b>	<b>-</b>	<b>10</b>	<b>0</b>	<b>0</b>	<b>0</b>	<b>-</b>	<b>0</b>
Placed for adoption with consent with current foster carer (under S19 AA 2002)	-	-	-	0	-	-	-	-	0	-
Placed for adoption with placement order with current foster carer (under S21 AA 2002)	-	-	-	-	-	-	-	-	-	-
Placed for adoption with consent not with current foster carer (under S19 AA 2002)	10	10	-	-	-	0	0	-	-	-
Placed for adoption with placement order not with current foster carer (under S21 AA 2002)	-	-	-	-	-	-	-	-	-	-
<b>Placement with parents</b>	<b>1,500</b>	<b>1,400</b>	<b>1,400</b>	<b>1,100</b>	<b>1,100</b>	<b>6</b>	<b>6</b>	<b>6</b>	<b>5</b>	<b>4</b>
<b>Other placements in the community</b>	<b>480</b>	<b>730</b>	<b>740</b>	<b>730</b>	<b>910</b>	<b>2</b>	<b>3</b>	<b>3</b>	<b>3</b>	<b>4</b>
Living independently	480	730	740	730	910	2	3	3	3	4
Residential employment	-	0	-	0	-	-	0	-	0	-
<b>Secure units, homes and hostels</b>	<b>3,100</b>	<b>3,200</b>	<b>3,000</b>	<b>2,900</b>	<b>3,000</b>	<b>13</b>	<b>13</b>	<b>13</b>	<b>12</b>	<b>12</b>
Secure unit inside LA boundary	40	40	30	30	40	0	0	0	0	0
Secure unit outside LA boundary <sup>6</sup>	110	170	200	180	140	0	1	1	1	1
Homes and hostels subject to Children's Homes regulations										
inside LA boundary	2,000	2,100	1,900	1,700	1,800	8	8	8	7	7
outside LA boundary	530	490	420	410	480	2	2	2	2	2
Homes and hostels not subject to Children's Homes regulations	410	480	440	530	580	2	2	2	2	2
<b>Other residential settings</b>	<b>640</b>	<b>650</b>	<b>650</b>	<b>680</b>	<b>720</b>	<b>3</b>	<b>3</b>	<b>3</b>	<b>3</b>	<b>3</b>
Residential care homes	80	80	70	100	120	0	0	0	0	0
NHS Trust providing medical/nursing care	410	440	420	430	420	2	2	2	2	2
Family centre or mother and baby unit	130	110	130	110	150	1	0	1	0	1
Young Treatment Centres	0	0	0	0	0	0	0	0	0	0
Young offenders institution or prison	10	20	30	30	30	0	0	0	0	0
<b>Residential Schools</b>	<b>220</b>	<b>200</b>	<b>160</b>	<b>190</b>	<b>170</b>	<b>1</b>	<b>1</b>	<b>1</b>	<b>1</b>	<b>1</b>
<b>Missing - Absent for more than 24 hours from agreed placement</b>	<b>30</b>	<b>40</b>	<b>40</b>	<b>40</b>	<b>50</b>	<b>0</b>	<b>0</b>	<b>0</b>	<b>0</b>	<b>0</b>
In refuge (S51 CA 1989)	0	-	0	0	10	0	-	0	0	0
Whereabouts known (not in refuge)	-	10	-	-	-	-	0	-	-	-
Whereabouts unknown	30	20	40	40	30	0	0	0	0	0
<b>Other placement</b>	<b>110</b>	<b>170</b>	<b>120</b>	<b>110</b>	<b>120</b>	<b>0</b>	<b>1</b>	<b>0</b>	<b>0</b>	<b>0</b>

Source: SSDA 903

1. Only the first occasion on which a child started to be looked after in the year has been counted.
2. Figures exclude children looked after under an agreed series of short term placements.
3. Historical data may differ from older publications. This is mainly due to the implementation of amendments and corrections sent by some local authorities after the publication date of previous materials.
4. This category includes new placement provider codes "Other Local Authority provision", "private provision" and "voluntary/third sector provision" for 2009 only.
5. Since 2004-05 placed for adoption has been disaggregated by whether the placement is or is not with current foster carer. Since 2006-07 placement also disaggregated according to whether consent was given or a placement order sought.
6. There are currently only 18 secure units operating in England therefore most placements will inevitably be outside the council boundary.

**Table D1: Children who ceased to be looked after during the years ending 31 March by gender, age on ceasing, reason episode ceased category of need and ethnic origin<sup>1,2,3</sup>**  
**Years ending 31 March 2005 to 2009**  
**Coverage: England**

	numbers and percentages									
	numbers					percentages				
	2005	2006	2007	2008	2009	2005	2006	2007	2008	2009
<b>All looked after children who ceased to be looked after<sup>1,2</sup></b>	<b>26,000</b>	<b>25,900</b>	<b>25,000</b>	<b>24,400</b>	<b>24,700</b>	<b>100</b>	<b>100</b>	<b>100</b>	<b>100</b>	<b>100</b>
<b>Gender</b>	<b>26,000</b>	<b>25,900</b>	<b>25,000</b>	<b>24,400</b>	<b>24,700</b>	<b>100</b>	<b>100</b>	<b>100</b>	<b>100</b>	<b>100</b>
Male	13,900	14,000	13,600	13,100	13,500	54	54	54	54	55
Female	12,100	12,000	11,400	11,300	11,200	46	46	46	46	45
<b>Age on ceasing (years)</b>	<b>26,000</b>	<b>25,900</b>	<b>25,000</b>	<b>24,400</b>	<b>24,700</b>	<b>100</b>	<b>100</b>	<b>100</b>	<b>100</b>	<b>100</b>
Under 1	1,400	1,400	1,300	1,300	1,300	5	5	5	5	5
1 to 4	5,600	5,500	5,400	5,500	5,900	22	21	21	22	24
5 to 9	4,100	3,800	3,600	3,200	3,300	16	15	14	13	13
10 to 15	7,300	6,900	6,500	5,900	5,600	28	27	26	24	23
16 and over	7,600	8,200	8,200	8,400	8,700	29	32	33	35	35
<b>Reason episode ceased</b>	<b>26,000</b>	<b>25,900</b>	<b>25,000</b>	<b>24,400</b>	<b>24,700</b>	<b>100</b>	<b>100</b>	<b>100</b>	<b>100</b>	<b>100</b>
Adopted - application unopposed <sup>4</sup>	3,800	3,700	1,700	1,700	1,700	20	14	7	7	7
Adopted - consent dispensed with <sup>4</sup>			1,600	1,400	1,500			6	6	6
Died	70	60	70	50	40	0	0	0	0	0
Care taken by another LA	230	240	240	190	170	1	1	1	1	1
Returned home to live with parents or relatives	12,100	11,000	10,200	9,500	9,400	47	42	41	39	38
Residence order granted	x	930	1,000	910	920	x	4	4	4	4
Special guardianship order made to former foster carers <sup>5</sup>			500	770	800			0	3	3
Special guardianship order made to carers other than former foster carers <sup>5</sup>	x	70	260	360	420	x	0	1	1	2
Moved into independent living (with supportive accommodation)	2,200	2,400	2,400	2,500	2,200	8	9	10	10	9
Moved into independent living (with no formalised support)	900	960	930	1,000	1,000	3	4	4	4	4
Transferred to residential care funded by adult social services	460	470	500	480	530	2	2	2	2	2
Sentenced to custody <sup>6</sup>	x	x	250	360	350	x	x	1	1	1
Care ceased for any other reason	6,200	6,100	5,300	5,200	5,700	24	24	21	21	23
<b>Category of need<sup>7</sup></b>	<b>26,000</b>	<b>25,900</b>	<b>25,000</b>	<b>24,400</b>	<b>24,700</b>	<b>100</b>	<b>100</b>	<b>100</b>	<b>100</b>	<b>100</b>
Abuse or neglect	12,500	12,400	12,000	12,100	12,500	48	48	48	50	51
Child's disability	790	850	800	710	760	3	3	3	3	3
Parents illness or disability	1,800	1,700	1,600	1,400	1,300	7	6	6	6	5
Family in acute stress	2,900	2,800	2,600	2,600	2,500	11	11	11	11	10
Family dysfunction	3,300	3,300	3,300	3,200	3,300	13	13	13	13	13
Socially unacceptable behaviour	1,600	1,500	1,300	1,200	1,100	6	6	5	5	4
Low income	80	70	80	50	70	0	0	0	0	0
Absent parenting	3,000	3,300	3,300	3,100	3,200	11	13	13	13	13
<b>Ethnic origin</b>	<b>26,000</b>	<b>25,900</b>	<b>25,000</b>	<b>24,400</b>	<b>24,700</b>	<b>100</b>	<b>100</b>	<b>100</b>	<b>100</b>	<b>100</b>
<b>White</b>										
White British	18,400	17,900	17,000	16,500	16,100	71	69	68	67	65
White Irish	200	200	180	130	150	1	1	1	1	1
Any other White background	1,000	980	940	850	820	4	4	4	3	3
Traveller of Irish Heritage <sup>8</sup>	x	x	x	x	10	x	x	x	x	0
Gypsy/Roma <sup>8</sup>	x	x	x	x	10	x	x	x	x	0
<b>Mixed</b>										
White and Black Caribbean	730	730	620	660	680	3	3	2	3	3
White and Black African	190	200	180	190	230	1	1	1	1	1
White and Asian	280	270	290	290	340	1	1	1	1	1
Any other mixed background	730	810	760	810	740	3	3	3	3	3
<b>Asian or Asian British</b>										
Indian	150	150	150	160	170	1	1	1	1	1
Pakistani	290	270	310	310	410	1	1	1	1	2
Bangladeshi	130	150	170	180	210	0	1	1	1	1
Any other Asian background	360	580	680	760	1,000	1	2	3	3	4
<b>Black or Black British</b>										
Caribbean	760	720	670	700	700	3	3	3	3	3
African	1,500	1,600	1,600	1,500	1,500	6	6	6	6	6
Any other Black background	440	480	480	480	430	2	2	2	2	2
<b>Other Ethnic groups</b>										
Chinese	70	120	160	130	120	0	0	1	1	0
Any other ethnic group	650	670	810	810	1,000	3	3	3	3	4
Refused <sup>8</sup>	x	x	x	x	10	x	x	x	x	0
Information not yet available <sup>8</sup>	x	x	x	x	120	x	x	x	x	0

Source: SSDA 903

1. Only the last occasion on which a child ceased to be looked after in the year has been counted.
2. Figures exclude children looked after under an agreed series of short term placements.
3. Historical data may differ from older publications. This is mainly due to the implementation of amendments and corrections sent by some local authorities after the publication date of previous materials.
4. Prior to 2006-07, the number of children looked after who were adopted could not be disaggregated.
5. In 2005-06 the number of children who ceased to be looked after due to the granting of a special guardianship order could not be disaggregated.
6. 'Sentenced to custody' was first collected in 2007.
7. The most applicable category of the eight "Need Codes" at the time the child was taken into care rather than necessarily the entire reason they are looked after.
8. Ethnic origin classification collected for the first time in 2009.



**Table D2: Children who ceased to be looked after during the years ending 31 March by placement on ceasing<sup>1,2,3</sup>**  
**Years ending 31 March 2005 to 2009**  
**Coverage: England**

Placement on ceasing	numbers and percentages									
	numbers					percentages				
	2005	2006	2007	2008	2009	2005	2006	2007	2008	2009
<b>Placement on ceasing</b>										
<b>All looked after children who ceased to be looked after<sup>1,2</sup></b>	<b>26,000</b>	<b>25,900</b>	<b>25,000</b>	<b>24,400</b>	<b>24,700</b>	<b>100</b>	<b>100</b>	<b>100</b>	<b>100</b>	<b>100</b>
<b>Foster placements</b>	<b>13,600</b>	<b>13,000</b>	<b>12,800</b>	<b>12,700</b>	<b>12,900</b>	<b>52</b>	<b>50</b>	<b>51</b>	<b>52</b>	<b>53</b>
Foster placement inside Council boundary										
With relative or friend	1,700	1,600	1,500	1,600	1,700	6	6	6	6	7
With other foster carer										
provided by Council	8,400	7,800	7,300	7,000	6,800	32	30	29	29	28
arranged through agency	430	490	630	750	770	2	2	3	3	3
Foster placements outside LA boundary										
With relative or friend	480	550	580	550	580	2	2	2	2	2
With other foster carer										
provided by Council	1,400	1,400	1,400	1,500	1,600	5	5	6	6	6
arranged through agency <sup>4</sup>	1,200	1,100	1,300	1,400	1,500	5	4	5	6	6
<b>Placed for adoption<sup>5</sup></b>	<b>3,800</b>	<b>3,700</b>	<b>3,300</b>	<b>3,100</b>	<b>3,300</b>	<b>15</b>	<b>14</b>	<b>13</b>	<b>13</b>	<b>13</b>
Placed for adoption with consent										
with current foster carer			220	160	150			0	1	1
(under S19 AA 2002)	310	410				1	2			
Placed for adoption with placement order										
with current foster carer			210	250	280			0	1	1
(under S21 AA 2002)										
Placed for adoption with consent										
not with current foster carer			1,200	740	680			0	3	3
(under S19 AA 2002)	3,500	3,300				13	13			
Placed for adoption with placement order										
not with current foster carer			1,700	2,000	2,200			0	8	9
(under S21 AA 2002)										
<b>Placement with parents</b>	<b>2,500</b>	<b>2,600</b>	<b>2,600</b>	<b>2,500</b>	<b>2,200</b>	<b>10</b>	<b>10</b>	<b>10</b>	<b>10</b>	<b>9</b>
<b>Other placements in the community</b>	<b>1,500</b>	<b>1,700</b>	<b>1,900</b>	<b>1,900</b>	<b>2,200</b>	<b>6</b>	<b>7</b>	<b>8</b>	<b>8</b>	<b>9</b>
Living independently	1,500	1,700	1,900	1,900	2,200	6	7	8	8	9
Residential employment	-	10	-	-	-	-	0	-	-	-
<b>Secure units, children's homes and hostels</b>	<b>3,700</b>	<b>4,000</b>	<b>3,600</b>	<b>3,400</b>	<b>3,300</b>	<b>14</b>	<b>15</b>	<b>14</b>	<b>14</b>	<b>13</b>
Secure unit inside Council boundary	50	50	30	40	50	0	0	0	0	0
Secure unit outside Council boundary <sup>6</sup>	160	220	230	210	180	1	1	1	1	1
Homes and hostels subject to										
Children's Homes regulations										
inside Council boundary	1,800	2,000	1,700	1,500	1,500	7	8	7	6	6
outside Council boundary	730	650	630	620	600	3	3	3	3	2
Homes and hostels not subject to										
Children's Homes regulations	900	1,100	1,000	980	940	3	4	4	4	4
<b>Other residential settings</b>	<b>320</b>	<b>310</b>	<b>310</b>	<b>340</b>	<b>340</b>	<b>1</b>	<b>1</b>	<b>1</b>	<b>1</b>	<b>1</b>
Residential care homes	80	80	80	90	100	0	0	0	0	0
NHS Trust providing medical/nursing care	50	70	50	50	60	0	0	0	0	0
Family centre or mother and baby unit	70	70	60	60	60	0	0	0	0	0
Young offenders institution or prison	110	90	120	130	130	0	0	0	1	1
<b>Residential schools</b>	<b>270</b>	<b>230</b>	<b>270</b>	<b>220</b>	<b>250</b>	<b>1</b>	<b>1</b>	<b>1</b>	<b>1</b>	<b>1</b>
<b>Missing - Absent for more than 24 hours from agreed placement</b>	<b>170</b>	<b>210</b>	<b>180</b>	<b>200</b>	<b>170</b>	<b>1</b>	<b>1</b>	<b>1</b>	<b>1</b>	<b>1</b>
In refuge (S51 CA 1989)	0	0	0	0	-	0	0	0	0	-
Whereabouts known (not in refuge)	50	30	30	40	40	0	0	0	0	0
Whereabouts unknown	120	180	150	160	120	0	1	1	1	0
<b>Other placement</b>	<b>120</b>	<b>140</b>	<b>90</b>	<b>90</b>	<b>80</b>	<b>0</b>	<b>1</b>	<b>0</b>	<b>0</b>	<b>0</b>

Source: SSDA 903

1. Only the last occasion on which a child ceased to be looked after in the year has been counted.
2. Figures exclude children looked after under an agreed series of short term placements.
3. Historical data may differ from older publications. This is mainly due to the implementation of amendments and corrections sent by some local authorities after the publication date of previous materials.
4. This category includes new placement provider codes "Other Local Authority provision", "private provision" and "voluntary/third sector provision" for 2009 only.
5. Since 2004-05 placed for adoption has been disaggregated by whether the placement is or is not with current foster carer. Since 2006-07 placements were also disaggregated according to whether consent was given or a placement order sought.
6. There are currently only 18 secure units operating in England therefore most placements will inevitably be outside the council boundary.

**Table D3: Mothers aged 12 years old and over who ceased to be looked after during the years ending 31 March**  
**by age on ceasing, age at birth of first child, category of need and ethnic origin<sup>1,2,3,4</sup>**

**Years ending 31 March 2006 to 2009**

**Coverage: England**

	numbers and percentages							
	numbers				percentages			
	2006	2007	2008	2009	2006	2007	2008	2009
<b>All females who ceased to be looked after<sup>1,2</sup></b>	<b>12,000</b>	<b>11,400</b>	<b>11,300</b>	<b>11,200</b>				
<b>All mothers aged 12 and over who ceased to be looked after<sup>1,2</sup></b>	<b>400</b>	<b>380</b>	<b>350</b>	<b>330</b>	<b>100</b>	<b>100</b>	<b>100</b>	<b>100</b>
<b>Age on ceasing (years)</b>	<b>400</b>	<b>380</b>	<b>350</b>	<b>330</b>	<b>100</b>	<b>100</b>	<b>100</b>	<b>100</b>
12 to 14	10	10	10	10	3	3	3	3
15	20	20	20	10	6	6	7	4
16	60	60	50	50	15	17	14	15
17	70	60	50	60	17	16	14	17
18 and over	230	220	220	210	59	58	62	62
<b>Age at birth of first child (years)</b>	<b>400</b>	<b>380</b>	<b>350</b>	<b>330</b>	<b>100</b>	<b>100</b>	<b>100</b>	<b>100</b>
12 to 14	50	30	40	30	12	9	11	10
15	70	80	80	70	18	20	23	21
16	120	110	120	100	29	28	33	31
17	130	130	110	120	33	34	32	37
18 and over	30	30	0	0	0	-	0	0
Birth date not reported	0	-	-	0	0	0	-	0
<b>Category of need<sup>5</sup></b>	<b>400</b>	<b>380</b>	<b>350</b>	<b>330</b>	<b>100</b>	<b>100</b>	<b>100</b>	<b>100</b>
Abuse or neglect	170	170	160	170	42	46	45	50
Child's disability	-	-	-	-	-	-	-	-
Parents illness or disability	20	10	10	10	4	2	2	3
Family in acute stress	50	50	30	40	11	13	9	11
Family dysfunction	70	60	60	60	16	16	18	18
Socially unacceptable behaviour	20	20	20	10	6	5	4	3
Low income	-	-	-	-	-	-	-	-
Absent parenting	80	70	70	50	20	18	20	14
<b>Ethnic origin</b>	<b>400</b>	<b>380</b>	<b>350</b>	<b>330</b>	<b>100</b>	<b>100</b>	<b>100</b>	<b>100</b>
White	260	240	230	210	65	64	66	63
Mixed	30	20	30	30	7	6	10	10
Asian or Asian British	10	10	10	10	2	3	2	2
Black or Black British	100	90	70	70	24	23	19	20
Other Ethnic groups	10	10	10	20	3	3	3	5

Source: SSDA 903

1. Only the last occasion on which a child ceased to be looked after in the year has been counted.
2. Figures exclude children looked after under an agreed series of short term placements.
3. Historical data may differ from older publications. This is mainly due to the implementation of amendments and corrections sent by some local authorities after the publication date of previous materials.
4. Data on mothers aged 12 years old and over who ceased to be looked after during the year ending 31 March started to be collected in 2005-06.
5. The most applicable category of the eight "Need Codes" at the time the child was taken into care rather than necessarily the entire reason they are looked after.

**Table E1: Looked after children adopted during the years ending 31 March by gender, age at adoption, ethnic origin, category of need, final legal status, duration of final period of care and age on starting final period of care**

**Years ending 31 March 2005 to 2009**

**Coverage: England**

	numbers and percentages									
	numbers					percentages				
	2005	2006	2007	2008	2009	2005	2006	2007	2008	2009
<b>All looked after children</b>	<b>61,000</b>	<b>60,300</b>	<b>60,000</b>	<b>59,400</b>	<b>60,900</b>					
<b>All Children looked after adopted</b>	<b>3,800</b>	<b>3,700</b>	<b>3,300</b>	<b>3,200</b>	<b>3,300</b>	<b>100</b>	<b>100</b>	<b>100</b>	<b>100</b>	<b>100</b>
<b>Gender</b>	<b>3,800</b>	<b>3,700</b>	<b>3,300</b>	<b>3,200</b>	<b>3,300</b>	<b>100</b>	<b>100</b>	<b>100</b>	<b>100</b>	<b>100</b>
Male	1,900	1,900	1,700	1,600	1,600	51	51	50	51	51
Female	1,800	1,800	1,700	1,500	1,600	49	49	50	49	49
<b>Age at adoption (years)</b>	<b>3,800</b>	<b>3,700</b>	<b>3,300</b>	<b>3,200</b>	<b>3,300</b>	<b>100</b>	<b>100</b>	<b>100</b>	<b>100</b>	<b>100</b>
Under 1	210	200	150	110	80	6	5	4	4	2
1 to 4	2,300	2,400	2,100	2,200	2,300	62	64	64	70	72
5 to 9	1,100	950	880	690	760	28	26	26	22	23
10 to 15	160	180	150	120	80	4	5	5	4	3
16 and over	20	20	10	20	-	0	0	0	1	-
Average age (yrs : months)	4:2	4:1	4:2	3:11	3:9					
<b>Ethnic origin</b>	<b>3,800</b>	<b>3,700</b>	<b>3,300</b>	<b>3,200</b>	<b>3,300</b>	<b>100</b>	<b>100</b>	<b>100</b>	<b>100</b>	<b>100</b>
White	3,300	3,200	2,800	2,600	2,700	86	85	85	83	82
Mixed	350	380	340	330	410	9	10	10	10	12
Asian or Asian British	50	50	50	60	70	1	1	2	2	2
Black or Black British	80	90	90	110	90	2	2	3	3	3
Other ethnic groups	40	30	30	20	20	1	1	1	1	1
<b>Category of need<sup>2</sup></b>	<b>3,800</b>	<b>3,700</b>	<b>3,300</b>	<b>3,200</b>	<b>3,300</b>	<b>100</b>	<b>100</b>	<b>100</b>	<b>100</b>	<b>100</b>
Abuse or neglect	2,800	2,700	2,500	2,300	2,400	74	74	74	73	73
Child's disability	30	20	20	20	20	1	1	1	1	1
Parents illness or disability	190	180	160	170	130	5	5	5	5	4
Family in acute stress	220	230	170	220	250	6	6	5	7	8
Family dysfunction	340	310	310	310	350	9	8	9	10	11
Socially unacceptable behaviour	10	10	10	-	10	0	0	0	-	0
Low income	-	10	10	-	-	-	0	0	-	-
Absent parenting	190	190	190	130	130	5	5	6	4	4
<b>Final legal status</b>	<b>3,800</b>	<b>3,700</b>	<b>3,300</b>	<b>3,200</b>	<b>3,300</b>	<b>100</b>	<b>100</b>	<b>100</b>	<b>100</b>	<b>100</b>
Freed for adoption <sup>3</sup>	1,900	1,900	1,200	290	100	49	51	37	9	3
Placement Order <sup>4</sup>	x	20	650	2,000	2,600	x	0	19	63	80
Care order	1,600	1,500	1,200	670	340	42	41	36	21	10
Voluntary agreement (S20)	340	280	230	220	200	9	8	7	7	6
<b>Duration of final period of care<sup>5</sup></b>	<b>3,800</b>	<b>3,700</b>	<b>3,300</b>	<b>3,200</b>	<b>3,300</b>	<b>100</b>	<b>100</b>	<b>100</b>	<b>100</b>	<b>100</b>
Under 1 year	260	240	170	130	100	7	6	5	4	3
1 year to under 2 years	1,400	1,400	1,200	1,200	1,200	36	38	36	39	37
2 years to under 3 years	1,100	1,100	980	1,100	1,200	30	30	29	34	36
3 years and over	1,000	950	960	740	790	27	26	29	23	24
Average duration (yrs : mths)	2:7	2:7	2:8	2:7	2:6					
<b>Age on starting final period of care (years)<sup>5</sup></b>	<b>3,800</b>	<b>3,700</b>	<b>3,300</b>	<b>3,200</b>	<b>3,300</b>	<b>100</b>	<b>100</b>	<b>100</b>	<b>100</b>	<b>100</b>
Under 1	2,100	2,100	1,900	1,900	2,000	56	57	58	61	62
1	470	470	370	380	400	13	13	11	12	12
2	400	340	360	300	320	11	9	11	9	10
3	300	270	260	200	220	8	7	8	6	7
4 and over	500	510	420	340	300	13	14	13	11	9
Average age (yrs : mths)	1:7	1:7	1:6	1:4	1:3					

Source: SSDA 903

1. Historical data may differ from older publications. This is mainly due to the implementation of amendments and corrections sent by some local authorities after the publication date of previous materials.
2. The most applicable category of the eight "Need Codes" at the time the child was taken into care rather than necessarily the entire reason they are looked after.
3. No new applications for freeing orders may be made on or after 30 December 2005.
4. Placement orders came into force on 30 December 2005.
5. "Period of care" refers to a continuous period of being looked after, which may include more than one placement or legal status.

**Table E2: Children looked after who were adopted during the years ending 31 March by number of adopters, legal status of adopters and by gender of adopters<sup>1</sup>**  
**Years ending 31 March 2007 to 2009**  
**Coverage: England**

	numbers and percentages					
	numbers			percentages		
	2007	2008	2009	2007	2008	2009
<b>All children looked after who were adopted during the year ending 31 March</b>	<b>3,300</b>	<b>3,200</b>	<b>3,300</b>	<b>100</b>	<b>100</b>	<b>100</b>
<b>Number of adopters</b>	<b>3,300</b>	<b>3,200</b>	<b>3,300</b>	<b>100</b>	<b>100</b>	<b>100</b>
1 person	290	270	270	9	9	8
2 persons	3,000	2,900	3,000	91	91	92
<b>Legal status and gender of adopters</b>	<b>3,300</b>	<b>3,200</b>	<b>3,300</b>	<b>100</b>	<b>100</b>	<b>100</b>
<b>Single adopter</b>	<b>290</b>	<b>270</b>	<b>270</b>	<b>9</b>	<b>9</b>	<b>8</b>
Single male adopter	20	10	10	1	0	0
Single female adopter	280	260	260	8	8	8
<b>Same sex couple not in civil partnership</b>	<b>70</b>	<b>50</b>	<b>50</b>	<b>2</b>	<b>2</b>	<b>1</b>
Adopting couple are both male	20	20	20	0	1	1
Adopting couple are both female	60	30	30	2	1	1
<b>Different sex unmarried couple</b>	<b>150</b>	<b>140</b>	<b>190</b>	<b>4</b>	<b>5</b>	<b>6</b>
<b>Civil partnership couple</b>	<b>20</b>	<b>30</b>	<b>80</b>	<b>1</b>	<b>1</b>	<b>2</b>
Adopting couple are both male	10	-	40	0	-	1
Adopting couple are both female	10	20	40	0	1	1
<b>Married couple</b>	<b>2,800</b>	<b>2,700</b>	<b>2,700</b>	<b>84</b>	<b>84</b>	<b>82</b>

Source: SSDA 903

1. Historical data may differ from older publications. This is mainly due to the implementation of amendments and corrections sent by some local authorities after the publication date of previous materials.

**Table F1: Children aged 16 years and over who ceased to be looked after during the years ending 31 March by gender, age on ceasing, ethnic origin, final placement and qualifications<sup>1,2,3</sup>**  
**Years ending 31 March 2005 to 2009**  
**Coverage: England**

	numbers and percentages									
	numbers					percentages				
	2005	2006	2007	2008	2009	2005	2006	2007	2008	2009
<b>All Children aged 16 years and over who ceased to be looked after<sup>1,2,3</sup></b>	<b>7,600</b>	<b>8,200</b>	<b>8,200</b>	<b>8,400</b>	<b>8,700</b>	<b>100</b>	<b>100</b>	<b>100</b>	<b>100</b>	<b>100</b>
<b>Gender</b>	<b>7,600</b>	<b>8,200</b>	<b>8,200</b>	<b>8,400</b>	<b>8,700</b>	<b>100</b>	<b>100</b>	<b>100</b>	<b>100</b>	<b>100</b>
Male	4,300	4,800	4,700	4,800	5,200	57	58	58	57	61
Female	3,300	3,500	3,500	3,600	3,400	43	42	42	43	39
<b>Age on ceasing (years)</b>	<b>7,600</b>	<b>8,200</b>	<b>8,200</b>	<b>8,400</b>	<b>8,700</b>	<b>100</b>	<b>100</b>	<b>100</b>	<b>100</b>	<b>100</b>
16	2,200	2,200	2,100	2,000	1,800	29	27	26	24	21
17	1,400	1,500	1,300	1,300	1,500	18	18	16	16	17
18th birthday	4,000	4,400	4,700	5,000	5,300	52	54	57	60	61
Older than 18th birthday	50	80	40	60	60	1	1	1	1	1
<b>Ethnic origin</b>	<b>7,600</b>	<b>8,200</b>	<b>8,200</b>	<b>8,400</b>	<b>8,700</b>	<b>100</b>	<b>100</b>	<b>100</b>	<b>100</b>	<b>100</b>
White										
White British	4,800	5,000	4,900	5,200	5,000	64	61	60	61	58
White Irish	60	70	50	40	50	1	1	1	0	1
Any other White background	560	490	420	360	350	7	6	5	4	4
Traveller of Irish heritage <sup>4</sup>	x	x	x	x	-	x	x	x	x	-
Gypsy/Roma <sup>4</sup>	x	x	x	x	0	x	x	x	x	0
Mixed										
White and Black Caribbean	140	170	150	200	200	2	2	2	2	2
White and Black African	60	50	40	40	40	1	1	0	0	0
White and Asian	50	50	50	70	80	1	1	1	1	1
Any other mixed background	180	200	200	180	180	2	2	2	2	2
Asian or Asian British										
Indian	40	50	50	70	60	1	1	1	1	1
Pakistani	50	60	90	80	120	1	1	1	1	1
Bangladeshi	30	40	30	30	60	0	0	0	0	1
Any other Asian background	170	350	420	490	690	2	4	5	6	8
Black or Black British										
Caribbean	240	240	200	210	220	3	3	2	3	3
African	730	820	830	760	730	10	10	10	9	8
Any other Black background	120	160	170	150	130	2	2	2	2	1
Other Ethnic groups										
Chinese	50	90	120	100	90	1	1	1	1	1
Any other ethnic group	290	370	460	480	670	4	4	6	6	8
Refused <sup>4</sup>	x	x	x	x	-	x	x	x	x	-
Information not yet available <sup>4</sup>	x	x	x	x	20	x	x	x	x	0
<b>Final placement</b>	<b>7,600</b>	<b>8,200</b>	<b>8,200</b>	<b>8,400</b>	<b>8,700</b>	<b>100</b>	<b>100</b>	<b>100</b>	<b>100</b>	<b>100</b>
Foster placements	3,000	3,000	3,100	3,300	3,200	39	37	38	39	37
Placed for adoption	20	20	10	20	10	0	0	0	0	0
Placed with parents	460	540	480	500	540	6	6	6	6	6
Other placements in the community	1,500	1,700	1,800	1,900	2,200	20	21	23	23	25
Secure units, children's homes and hostels	2,100	2,400	2,200	2,200	2,200	28	29	27	26	25
Other residential settings	190	180	180	200	200	2	2	2	2	2
Residential schools	190	150	190	170	190	2	2	2	2	2
Missing - Absent for more than 24 hours from agreed placement	90	130	110	130	100	1	2	1	1	1
Other placement	70	70	50	50	50	1	1	1	1	1
<b>Qualifications</b>										
At least 1 GCSE or GNVQ	3,200	3,500	3,600	3,900	3,800	42	43	44	46	44
At least 5 GCSEs at grade A*-C	460	530	540	610	620	6	6	7	7	7

Source: SSDA 903

1. Only the last occasion on which a child ceased to be looked after in the year has been counted.
2. Figures exclude children looked after under an agreed series of short term placements.
3. Historical data may differ from older publications. This is mainly due to the implementation of amendments and corrections sent by some local authorities after the publication date of previous materials.
4. Ethnic origin classification collected for the first time in 2009

**Table G1: Children now aged 19 years old who were looked after on 1 April 2002, 1 April 2003, 1 April 2004, 1 April 2005 and 1 April 2006 then aged 16 years (in their 17th year) by gender, activity and accommodation<sup>1,2</sup>**  
**Years ending 31 March 2005 to 2009**

**Coverage: England**

	numbers and percentages									
	numbers					percentages				
	2005 <sup>3</sup>	2006 <sup>4</sup>	2007 <sup>5</sup>	2008 <sup>6</sup>	2009 <sup>7</sup>	2005 <sup>3</sup>	2006 <sup>4</sup>	2007 <sup>5</sup>	2008 <sup>6</sup>	2009 <sup>7</sup>
<b>All children now aged 19 years old who were looked after on 1 April 2002 to 2006 then aged 16 years old<sup>1</sup></b>	<b>5,200</b>	<b>5,300</b>	<b>5,800</b>	<b>5,800</b>	<b>6,100</b>	<b>100</b>	<b>100</b>	<b>100</b>	<b>100</b>	<b>100</b>
Unaccompanied asylum seeking children now aged 19 years old who were looked after on 1 April 2002 to 2006 then aged 16 years old	180	140	220	270	370	3	3	4	5	6
<b>Gender</b>	<b>5,200</b>	<b>5,300</b>	<b>5,800</b>	<b>5,800</b>	<b>6,100</b>	<b>100</b>	<b>100</b>	<b>100</b>	<b>100</b>	<b>100</b>
Male	2,900	3,000	3,200	3,300	3,400	56	57	56	57	56
Female	2,300	2,300	2,600	2,500	2,700	44	43	44	43	44
<b>Activity<sup>8</sup></b>	<b>5,200</b>	<b>5,300</b>	<b>5,800</b>	<b>5,800</b>	<b>6,100</b>	<b>100</b>	<b>100</b>	<b>100</b>	<b>100</b>	<b>100</b>
<b>In higher education i.e. studies beyond A level</b>	<b>310</b>	<b>340</b>	<b>350</b>	<b>390</b>	<b>420</b>	<b>6</b>	<b>6</b>	<b>6</b>	<b>7</b>	<b>7</b>
Full time	x	x	340	370	400	x	x	6	6	7
Part time	x	x	10	20	20	x	x	0	0	0
<b>In education other than higher education</b>	<b>960</b>	<b>1,200</b>	<b>1,500</b>	<b>1,600</b>	<b>1,600</b>	<b>19</b>	<b>22</b>	<b>26</b>	<b>28</b>	<b>26</b>
Full time	x	x	1,300	1,400	1,400	x	x	23	24	23
Part time	x	x	180	180	190	x	x	3	3	3
<b>In training or employment</b>	<b>1,800</b>	<b>1,800</b>	<b>1,800</b>	<b>1,800</b>	<b>1,800</b>	<b>34</b>	<b>34</b>	<b>31</b>	<b>31</b>	<b>30</b>
Full time	x	x	1,300	1,300	1,300	x	x	23	22	21
Part time	x	x	470	510	540	x	x	8	9	9
Not in education, training or employment owing to illness or disability	260	240	290	270	300	5	5	5	5	5
Not in education, training or employment owing to other reasons	1,300	1,300	1,400	1,400	1,600	26	26	24	24	26
Not in touch	560	380	450	380	340	11	7	8	6	6
<b>Accommodation<sup>9</sup></b>	<b>5,200</b>	<b>5,300</b>	<b>5,800</b>	<b>5,800</b>	<b>6,100</b>	<b>100</b>	<b>100</b>	<b>100</b>	<b>100</b>	<b>100</b>
With parents or relatives	690	700	720	700	780	13	13	12	12	13
Community home	230	260	250	280	260	4	5	4	5	4
Semi-independent, transitional accommodation	420	420	540	550	550	8	8	9	9	9
Supported lodgings	360	410	450	520	570	7	8	8	9	9
Ordinary lodgings	190	250	270	280	260	4	5	5	5	4
Foyers	80	90	60	90	80	2	2	1	2	1
Independent living	2,200	2,300	2,500	2,400	2,600	42	43	43	42	43
Emergency accommodation	30	30	40	40	30	1	1	1	1	0
Bed and breakfast	50	40	40	50	50	1	1	1	1	1
In custody	150	160	180	180	160	3	3	3	3	3
Other accommodation	240	270	270	340	370	5	5	5	6	6
Not in touch	560	380	450	380	340	11	7	8	6	6

Source: SSDA 903

- Figures exclude children who were looked after on 1 April aged 16 (in their 17th year) under an agreed series of short term placements.
- Historical data may differ from older publications. This is mainly due to the implementation of amendments and corrections sent by some local authorities after the publication date of previous materials.
- Children now aged 19 years old who were looked after on 1 April 2002 then aged 16 years old (in their 17th year)
- Children now aged 19 years old who were looked after on 1 April 2003 then aged 16 years old (in their 17th year)
- Children now aged 19 years old who were looked after on 1 April 2004 then aged 16 years old (in their 17th year)
- Children now aged 19 years old who were looked after on 1 April 2005 then aged 16 years old (in their 17th year)
- Children now aged 19 years old who were looked after on 1 April 2006 then aged 16 years old (in their 17th year)
- Full and part time activity was collected separately from 2006-07.
- This includes accommodation judged both suitable and unsuitable.